



Illinois Environmental Protection Agency

Bureau of Water • 1021 N. Grand Avenue E. • P.O. Box 19276 • Springfield • Illinois • 62794-9276

Division of Water Pollution Control ANNUAL FACILITY INSPECTION REPORT

for NPDES Permit for Storm Water Discharges from Separate Storm Sewer Systems (MS4)

This fillable form may be completed online, a copy saved locally, printed and signed before it is submitted to the Compliance Assurance Section at the above address. Complete each section of this report.

Report Period: From March, 2019 To March, 2020

Permit No. ILR40 0664

MS4 OPERATOR INFORMATION: (As it appears on the current permit)

Name: Village of Tilton Mailing Address 1: 1001 Tilton Road
Mailing Address 2: _____ County: Vermilion
City: Tilton State: IL Zip: 61833 Telephone: 217-477-0800
Contact Person: David Phillips, Mayor Email Address: dphillips@tilton.com
(Person responsible for Annual Report)

Name(s) of governmental entity(ies) in which MS4 is located: (As it appears on the current permit)

Village of Tilton, Illinois

THE FOLLOWING ITEMS MUST BE ADDRESSED.

A. Changes to best management practices (check appropriate BMP change(s) and attach information regarding change(s) to BMP and measurable goals.)

- | | |
|---|--|
| 1. Public Education and Outreach <input type="checkbox"/> | 4. Construction Site Runoff Control <input type="checkbox"/> |
| 2. Public Participation/Involvement <input type="checkbox"/> | 5. Post-Construction Runoff Control <input type="checkbox"/> |
| 3. Illicit Discharge Detection & Elimination <input type="checkbox"/> | 6. Pollution Prevention/Good Housekeeping <input type="checkbox"/> |

B. Attach the status of compliance with permit conditions, an assessment of the appropriateness of your identified best management practices and progress towards achieving the statutory goal of reducing the discharge of pollutants to the MEP, and your identified measurable goals for each of the minimum control measures. (See Attachment A & B)

C. Attach results of information collected and analyzed, including monitoring data, if any during the reporting period. (See Attachment C, D, E & F)

D. Attach a summary of the storm water activities you plan to undertake during the next reporting cycle (including an implementation schedule.) (See Attachment H)

E. Attach notice that you are relying on another government entity to satisfy some of your permit obligations (if applicable).

F. Attach a list of construction projects that your entity has paid for during the reporting period.

Any person who knowingly makes a false, fictitious, or fraudulent material statement, orally or in writing, to the Illinois EPA commits a Class 4 felony. A second or subsequent offense after conviction is a Class 3 felony. (415 ILCS 5/44(h))

Village of Tilton David Phillips
Owner Signature:

04-10-2020
Date:

David Phillips

Mayor

Printed Name:

Title:

EMAIL COMPLETED FORM TO: epa.ms4annualinsp@illinois.gov

or Mail to: ILLINOIS ENVIRONMENTAL PROTECTION AGENCY
WATER POLLUTION CONTROL
COMPLIANCE ASSURANCE SECTION #19
1021 NORTH GRAND AVENUE EAST
POST OFFICE BOX 19276
SPRINGFIELD, ILLINOIS 62794-9276

This Agency is authorized to require this information under Section 4 and Title X of the Environmental Protection Act (415 ILCS 5/4, 5/39). Failure to disclose this information may result in: a civil penalty of not to exceed \$50,000 for the violation and an additional civil penalty of not to exceed \$10,000 for each day during which the violation continues (415 ILCS 5/42) and may also prevent this form from being processed and could result in your application being denied. This form has been approved by the Forms Management Center.

TABLE OF CONTENTS

<u>Item</u>	<u>Page</u>	<u>(dpf #)</u>
2019 - 2020 Annual Facility Inspection Report for NPDES Permit for Storm Water Discharges from Separate Storm Sewer Systems (MS4).....	Cover	(1)
TABLE OF CONTENTS.....	TOC1-TOC4	(2-5)
<u>ATTACHMENT A</u>		
○ Summary of Tilton Storm Water Management Program Activity with Regard to Requirements of General NPDES ILR40 for MS4.....	A1-A4	(6-9)
<u>ATTACHMENT B</u>		
○ Annual Facilities Inspection Report Stormwater Activity Summary Period March 2019 - 2020.....	B1-B2	(10-11)
○ List of Actual 2019/2020 Construction Maintenance Projects.....	B3	(12)
<u>ATTACHMENT C</u> <u>GRAPE CREEK THROUGH TILTON</u>		
○ APRIL 10, 2019 Grape Creek & Storm Sewer Outfall Photographic Observations.....	C1-C12	(13-24)
○ OCTOBER 21, 2019 Grape Creek & Storm Sewer Outfall Photographic Report.....	C13-C27	(25-39)
○ JANUARY 23, 2020 Grape Creek Near Illinois Route 1 Photographic Report.....	C28-C29	(40-41)
<u>ATTACHMENT D</u> <u>VERMILION RIVER THROUGH TILTON</u>		
○ JUNE 24, 2019 Vermilion River Through Tilton Photographic Observations.....	D1-D7	(42-48)
○ OCTOBER 21, 2019 Vermilion River Storm Sewer Outfall Photographic Observations.....	D8-D12	(49-53)
○ FEBRUARY 19, 2020 Vermilion River Storm Sewer Outfall Photographic Observations.....	D13-D15	(54-56)

ATTACHMENT E VILLAGE INSPECTIONS & MAINTENANCE OPERATIONS

- JUNE 3, 2019 Senior Special Solid Waste Collection
Photographic Observations.....E1-E3 (57-59)
- JUNE 8 , 2019 Solid Waste Clean-up day
Photographic Observations.....E4-E7 (60-63)
- SUMMER through FEBRUARY 25, 2020 Public Works
Facilities & Maintenance Operations and
Street Sweeping Log
Photographic Observations.....E8-E16 (64-72)
- MAY 22, 2019 Watershed "C" Storm Sewer Generally
Toward Grape Creek Photographic Observations .E17-E19(73-75)
- JUNE 17, 2019 MACH 1 Store # 24, Erosion Control &
Inspection Observation.....E20-E26(76-82)
- JUNE 28, 2019 Map Request & Drainage Structure
Observations at Norfolk Southern Railroad.....E27-E29 (83-85)
- OCTOBER 10 through 28th, 2019 Observation Report 2,
Southgate Drive Discharge Erosion Stabilization...E30-E40 (86-96)
- JANUARY 29, 2020 Illinois Route 1 (Georgetown Road)
Solid Waste Containment Photographic
Observations.....E41-E57(97-113)

**ATTACHMENT F GRAPE CREEK & VERMILION RIVER UPSTREAM AND
DOWNSTREAM OF TILTON**

- JUNE 22, 2019 Middle Fork River between
Kennekuk County Park & Kickapoo State Park
Photographic Observations.....F1-F5(114-118)
- JULY 24, 2019 Vermilion River between
Salt Fork and North Fork River
Photographic Observations.....F6-F14 (119-127)
- APRIL 6, 2019 through JANUARY 23, 2020 Danville Dam
Removal from Vermilion River Downstream of
Tilton Photographic Observations.....F15-F21 (128-134)
- MARCH 12, 2019 through JANUARY 23, 2020 Ellsworth
Park Dam Removal from North Fork River
Photographic Observations.....F22-F31 (134-144)

**ATTACHMENT F GRAPE CREEK & VERMILION RIVER UPSTREAM AND
DOWNSTREAM OF TILTON (continued)**

- JANUARY 23, 2020 Grape Creek Upstream of
Tilton Photographic Observations.....F32-F39(145-152)
- Map of Middle Fork River Watershed toward Tilton.....F40 (153)
- Map of Salt Fork River Watershed toward Tilton.....F41 (154)
- Map of Grape Creek WatershedF42 (155)

ATTACHMENT G GENERAL CORRESPONDENCE, PLANS, EDUCATIONS & OUTREACH

- EPA & Village communication.....G1-G10(156-165)
- Southgate Drive Discharge Erosion Stabilization
Plan, Observation Report 1F, Army Corp of Engineers Permit & Illinois
ECOT CAT Permit.....G11-G27(166-182)
- East 1st Street correspondence & preliminary
access plan.....G28-G31(183-186)
- McVey Avenue Culvert Mitigation preliminary plan...G32-G34 (187-189)
- Independent News Public Meeting Advertisement.....G35 (190)
- Flyer regarding Public Input, Education and Outreach
Meeting.....G36 (191)
- Photograph of pollution prevention posted at DACC.....G37 (192)
- Out Reach Education DACC Engineering Day.....G38 (193)
- U of I class & topic schedule for “All Connected: Human
Behavior and the Environment in the Vermilion River
System.....G39-G40(194-195)
- Illicit Discharge Tracking Sheet.....G41 (196)
- Street Sweeping Log.....G42 (197)
- Sewer Cleaning Log.....G43 (198)

ATTACHMENT H PROPOSED 2020 / 2021 TILTON STORM WATER MANAGEMENT PROGRAM

- Proposed 2020/2021 Stormwater Activity Summary.....H1–H3(199-201)
- Tentative List of 2020/2021 Construction &
Maintenance Projects.....H3 (201)
- Public Outreach / Education Materials.....H4 (202)

APPENDIX Environmental Justice Reports

- **Environmental Justice Scream Map of Tilton Area.....(203)**
- **Implementing the Hierarchy of Controls for Wastewater
Worker Protection flow chart.....(204)**

Brochures used are available on Village Storm Water Management Website

ATTACHMENT A

SUMMARY OF TILTON STORM WATER MANAGEMENT PROGRAM ACTIVITY WITH REGARD TO REQUIREMENTS OF GENERAL NPDES IL R40 FOR MS4

On February 10, 2016 the Illinois Environmental Protection Agency issued the General National Pollutant Discharge Elimination System (NPDES) ILR40 for the discharge of storm water from Small Municipal Separate Storm Sewer Systems (MS4). Striving to comply with this permit, tasks were completed and are ongoing. The following is a summary list of items the Village of Tilton achieved during this year in addition to information in previous Annual Reports:

- Engineer used EJSCREEN Mapping web tools on areas of Tilton; though areas did not meet the Environmental Justice Area criteria, EJSCREEN did indicate areas of Tilton with significant population aged over 64 and possibly some low income residents.
- The Village took action by collecting and landfilling 13.97 tons during a Senior Special Waste curb side pickup June 3^{rd, 2019} and six 30 cubic yard container loads or 19.97 tons of waste were landfilled when 115 resident brought waste to the June 8^{th, 2019} Solid Waste Clean-up Day. Engineer observed these efforts and included photograph observation reports.
- Village Sewer Department obtained robotic video pipe inspection recording equipment in a box truck during this reporting period. Staff continues training and indicated it utilized the equipment inspecting several sections of sanitary sewer. Engineer used map to estimate 7,300 feet sanitary sewer including 20 manholes exist in these sections.
- Village Staff indicated it used the Vactor Truck to clean the storm sewer north of the Norfolk Southern Railroad and east of the CSX Railroad within Village. Using map, Engineer estimates 19,870 feet of storm sewer and 130 drainage structures exist in this area.
- Village Staff reported 9 days of sweeping streets. Stockpile of swept material at Public Works area is approximately 5.5 cubic yards.
- Village coordinated with Gleisner Engineering to prepare plan, specifications and estimate also obtained Army Corp of Engineers and Illinois Department of Natural

Resources permits then in October implemented stabilization of the Southgate Drive 36 Inch diameter storm sewer discharge with 99 cubic yards of grouted rip rap in 22 linear feet of Grape Creek bank. Engineer prepared observations reports for permitting and of implementation.

- Continued updating and expanding the Village Storm Water Management website this year by including additional links to National Pollution Discharge System (NPDES), National Climate Assessment, Wetlands Mapper, Illinois Environmental Protection Agency and Village Pollution Prevention Ordinances. Previous links to EPA websites regarding Best Management Practices, Climate Change and Environmental Justice also Center for Watershed Protection remains. Annual Facility Inspection Reports are posted on this website.
- Further expanded format of Village website by adding “Use Local Vehicle Wash Facilities.”
- Continued updating digital version of the Storm and Sanitary Sewer Base Map system:
 - Numbering of additional sanitary and storm sewer manholes and drainage outfall structures.
 - Updated location of Village wash-down facilities also the three private truck and/or car wash facilities.
 - Included new drainage facilities known to be added to the Village.
 - Included found drainage facilities within Village & immediately upstream.
 - In addition this year Gleisner Engineering prepared it’s 8 ½” by 11” color Sewer Map Book including Index Map and Illicit Discharge and Sewer Maintenance log sheet for exclusive use by Village Staff while utilizing Vactor and/or video sewer inspection trucks; allowing for compliance with Illinois EPA request for measurable maintenance accounting and reporting.
- Engineer continues to monitor and inspect storm water management facilities by conducting visual inspection, photographing conditions and documented color, odor, clarity, floating solids, suspended solids, foam, oil sheen or other obvious indicators of storm water pollution at storm sewer outfall structures in Village and Grape Creek Bridges. Prepared photographic inspection reports including suggestions and recommendations. Improved measurement of facilities for addition to digital mapping systems. Engineer occasionally visits sites of both Danville and Ellsworth Park Dam removals immediately downstream of Tilton, dates photographs and prepares observations for reporting.
- The Illinois State Map regarding Section 303(d) of the Clean Water Act lists the Vermilion River upstream, through and downstream of Tilton as “Medium” priority for Total Maximum Daily Load (TMDL) cause of polychlorinated biphenyls, mercury and fecal coliform. Village tested it’s storm sewer outfall structures for concentration of these substance in discharges in 2016; in addition the Engineer is reviewing websites

of MS4 annual reports where available upstream of Tilton in the Vermilion River Water Shed are found and performs upstream inspections and makes observations.

- Engineer attended and participated in a series of ten 50 minute public lectures at the University of Illinois titled “All Connected: Human Behavior and the Environment in the Vermilion River System”. Engineer provided summary of lectures to Village Board and public at monthly board meetings.
- Engineer reviewed the September 15, 2015 North Fork Vermilion River Atrazine and October 7, 2007 Salt Fork Vermilion River Total Maximum Daily Load (TMDL) reports; both regarding rivers upstream of Tilton water.
- Engineer advertised for, prepared for and was available at a meeting February 20, 2020 at 5:00 pm at Village Hall presenting topics on Pollution Prevention, Website, Inspection Documentation and Environmental Justice, public was in attendance prior to the board meeting.
- Engineer prepared Summary of MS4 Permit Requirements & Storm Water Pollution Prevention outreach educational material then presented to 11 attendees of the Vermilion County Ice Box Club Board luncheon meeting February 18th and to 19 students and 8 staff during four 20 minute sessions for Engineering Day at Danville Area Community College February 21, 2020. Engineer obtained permission and posted Storm Water Pollution Prevention information on DACC bulletin boards
- Engineer inspected 33 solid waste container sites along Illinois Route 1 through Tilton and prepared photographic observation report.
- Reviewed Village Stormwater Ordinances per requirements of the reissued General Permit. Erosion, Sediment Control and Storm Water ordinance exist. The solid waste containment, green infrastructure and post-construction maintenance ordinances are under consideration.
- Engineer reviewed Village facilities by 1) visual inspections, 2) photography and 3) documentations. Included in Annual Reporting of the Village equipment wash-down system, salt storage, chemical & fertilizer storage areas, oil & fuel systems, street sweeping, Vector truck and solid waste operations. Engineer provides improvement suggestions and recommendations to Village.
- During various rain events and wet conditions, Engineer inspects sections of Grape Creek through Tilton and makes visual assessments of flow rate and stream water quality.

- **To fund sewer improvements beginning January 1, 2020 the Village sewer rate increased to a \$20 basic user fee for the first 1,000 gallons and an additional \$3 per 1,000 gallons used. Then beginning January 1, 2021 rates for customers increase to \$25 basic user fee for the first 1,000 gallons and an additional \$4 per 1,000 gallons used. The Village plans to borrow \$18,000,000 from the Environmental Protection Agency to improve the sanitary sewer system.**
- **March 4, 2020 Illinois Environmental Protection Agency Division of Water Audited the Village MS4 program and provided written suggestion and recommendations to strengthen the program. Village is implementing suggestions.**
- **Engineer is using Wetland Mapper and US Fish and Wildlife Consultation and Illinois Department of Natural Resources EcoCAT web tool to identify endangered and threatened species in Tilton area and began to prepare report for inspection reference.**
- **On March 16, 2020 the Governor's Office issued an Illinois Executive Order in Response to COVID-19. Stormwater Management Authorities should stay informed of the latest information from state and federal authorities to keep workers safe. Attached at the end of this report is a flow chart "Implementing the Hierarchy of Controls for Wastewater Worker Protection".**

ATTACHMENT B
Annual Facility Inspection Report
MS4 PHASE 2 NPDES Permit No. IL400664
Village of Tilton, Illinois
(Reporting Period March 2019/2020)

2019/2020 MS4 PHASE 2 NPDES STORM WATER ACTIVITY SUMMARY

BMP #	BMP	Category	Description	Activity
A	Public education and outreach	A.1	Distributed paper material	Distributed public education material, made available at Village Hall and posting on Village Storm Water Management website for interested public also review by regulating agencies. Obtained permission then posted water pollution prevention brochures on DACC bulletin board.
		A.5	Classroom education materials	Engineer prepared Summary of MS4 Permit Requirements & Pollution Prevention outreach material then presented at local college and club totaling 38 attendees.
		A.6	Other Public Education	Public meeting/training held February 20, 2020 regarding Village MS4 Best Management Practices, discharge outfall monitoring, Environmental Justice and Village Storm Water Management website.
B	Public participation\involvement	B.2	Educational volunteer	Engineer attended "All Connected" Human Behavior and the Environment in the Vermilion River System series of lectures at University of Illinois and engaged in public dialog regarding storm water issues. Engineer provided brief summary of these 10 lectures at typically monthly public Village Board meeting. Engineer presented MS4 & water pollution prevention at four 20 minute sessions during Engineering Day at Danville Area Community College.
		B.7	Other public involvement	Village held June 3rd Senior Special Waste Pickup where staff loaded and landfilled 13.97 tons of waste and June 8th Clean-up Day where 115 residents participated in collecting six 30 cubic yard containers or 19.97 tons of waste landfilled. Engineer performed a screen iteration using mapping tools on EPA Environmental Justice website and generated report.
C	Illicit discharge detection and elimination	C.1	Sewer map updated	Updated digital storm and sanitary sewer facilities on Tilton Area Drainage Map continued numbering of manholes and drainage outfall structures. Added identified, new & found facilities. Engineer prepared 8 1/2" by 11" color Sewer Base Map book for reference by Village staff during sewer maintenance using Vactor and video inspection trucks. Engineer requests maps from N&S Railroad regarding drainage in Tilton.
		C.3	Detection/Elimination Prioritization Plan	Inspected 33 solid waste containment areas along IL Route 1 and generated photographic observation report of conditions. Communicating to contain loose waste. Village staff used its smoke blower, vactor truck & video inspection truck for sewer inspections. Engineer mapped and reported observations and is reviewing Annual Reports of listed MS4 communities upstream & immediately downstream of Tilton where found available.
		C.7	Visual dry weather screening	Performed observation/screening of storm sewer outlets along Grape Creek and Vermilion River. Included upstream & downstream of Tilton. Photographic document Reported.
		C.10	Illicit Discharge Controls	Village planning Sanitary Sewage Treatment Plant improvements for higher quality water discharge. Continue review of mapping for potential areas to detain and treat water run-off from major fires. Review of Village ordinances with regard to solid waste containment compliance.

ATTACHMENT B
Annual Facility Inspection Report
MS4 PHASE 2 NPDES Permit No. IL400664
Village of Tilton, Illinois
(Reporting Period March 2019/2020)

2019/2020 MS4 PHASE 2 NPDES STORM WATER ACTIVITY SUMMARY (CONTINUED)

BMP #	BMP	Category	Description	Activity
D	Construction site runoff control	D.2	Erosion and Sediment Control BMPs	Implemented Village Erosion and Sediment Control Ordinances into construction projects. Engineer inspected construction projects and prepared reports to improve conditions.
		D.7	Other Construction Site Run-off Controls	Reviewed Village Erosion, Sediment Control and Storm Water Ordinance regarding permit requirements. Inspect construction sites for erosion control effectiveness.
E	Post-Construction runoff control	E.4	Pre-Construction Review of BMP Design	Inspection of erosion and sediment control measures are conducted by the Village officials and consulting engineer at pre and post-construction stages of the construction projects within the Village. Engineer takes photographs of erosion conditions near site visits & prepares report.
		E.6	Post-Construction Inspections	Village and consulting engineer perform post-construction visual observation of construction sites regarding Storm Water Management BMPs.
		E.7	Other Post-Construction Run-off Controls	Engineer continues preparation of plans, specifications & estimates to mitigate erosion at several locations.
F	Pollution Prevention/ Good Housekeeping	F.1	Employee Training Program	Continued training for Village public works personnel regarding proper sewer video inspection, smoking & cleaning operations. Village obtained recordable video robotic sewer inspection equipment box truck.
		F.2	Inspection and Maintenance Program	Inspected inlet and outlet drainage facilities within Village during dry & wet weather thence prepared observation reports. Plans completed & permits obtained then 99 cubic yard of stone rip rap grout mix placed to dissipate Southgate Dr 36" diameter storm sewer discharge; prepared observation reports. Street sweeping reported on 9 days, 5.5 cubic yards stockpiled. Two man Vactor truck crew cleaned storm sewers west of CSX Railroad and north of N&S Railroad; map indicates 19,870 feet of storm sewer and 130 drain structures exist in area. Two man crew used Village robotic sanitary sewer truck to inspect sanitary sewer; map indicates 7,300 feet of sanitary sewer and 20 manholes exist in these sections. Inspection Engineer continues to identify drainage maintenance needs then prepares plans, specifications & cost estimate also communicates permits, implementation and prepares observation documentation for reporting.
		F.3	Municipal Operations Storm Water Control	Performed visual inspection of streams within Village jurisdiction for accumulated debris or erosion. Engineer measures bridge openings and bank cross sections to estimate stream hydraulic capacity.
		F.4	Municipal Operation Waste Disposal	Continue to improve plans to separate debris from stream, drainage system and various public works clean-ups into recyclables, landscape waste and garbage. Identify appropriate locations to dispose or recycle materials in manner avoiding storm water pollution.

ATTACHMENT B
Annual Facility Inspection Report
MS4 PHASE 2 NPDES Permit No. IL400664
Village of Tilton, Illinois
(Reporting Period March 2019/2020)

2019/2020 MS4 PHASE 2 NPDES STORM WATER ACTIVITY SUMMARY (CONTINUED)

BMP #	BMP	Category	Description	Activity
		F.5	Flood Management/Access Guidelines	Inspected Grape Creek through Village during wet & dry weather to assess, photograph and coordinate removal of debris build-up obstructing or potentially restricting storm sewer discharge, channel and/or bridges. Engineer takes measurements & calculates stream flow capacities & considers in recommending maintenance. General strategy is to regulate storm water flow from upstream of Tilton, remove drainage obstructions from existing storm sewer non-polluting discharges also stream flow through the Village to prevent storm water from mixing with sanitary sewer water during wet weather events which can overwhelm sanitary sewers, pumps and treatment plant. Engineer regularly observes and reports conditions of Danville and Ellsworth Park low head dam removals from Vermilion and North Fork Rivers respectively.
		F.6	Other Municipal Operation Controls	Inspected, photographed and measured drainage facilities immediately upstream of Village and plotted on digital drainage update map.

LIST OF ACTUAL 2019/2020 CONSTRUCTION & MAINTENANCE PROJECTS PAID FOR BY TILTON

Project	Item #	Item	Status
1ST AVE, 16TH ST, SOUTHGATE DR, 14TH ST, IL RT 1 & LANE ST	I	ROAD, GRADING, STORM SEWER AND RETENTION BASIN CONSTRUCTION	PAVEMENT FUNCTIONAL, EROSION CONTROL STRENGTHEN
MFT MAINTENANCE	II	PAVEMENT REHABILITATION EAST ROSS LANE	PAVEMENT GRADED
EAST 1st STREET CHANNEL CLEARING	III	DEBRIS REMOVAL, GRADING & DRAINAGE MAINTENANCE	PREPARED PLANS, SPECIFICATIONS & ESTIMATE ALSO COMMUNICATE WITH PROPERTY OWNER
CATLIN TILTON ROAD	IV	PAVEMENT REHABILITATION	ASPHALT PAVEMENT RESURFACED
SOUTHGATE STORM SEWER	V	DISCHARGE EROSION MITIGATION	PLANS, SPECIFICATIONS & ESTIMATE COMPLETED ALSO OBTAINED PERMITS
"G" STREET BRIDGE	VI	PAVEMENT & BRIDGE JOINT REPLACEMENT	PRELIMINARY PLANS AND ESTIMATE PREPARED LOCATE FUNDING
MORRISON STREET STORM SEWER	VII	DRAINAGE IMPROVEMENT	FOUND STORM & SANITARY MANHOLES THEN ENGINEERED MAINTENANCE INSPECTION PLAN
WALNUT COTTAGES	VIII	CLEARING, DEMOLITION & PLANNING	SITE CLEARING



GLEISNER
ENGINEERING

217-213-2022

josephgleisner@att.net

**RE: APRIL 10, 2019 PHOTOGRAPHIC OBSERVATIONS OF
GRAPE CREEK BETWEEN ILLINOIS ROUTE 1 & EAST ROSS
LANE FOR MONITORING OF SMALL MUNICIPAL SEPARATE
STORM SEWER (MS4), VILLAGE OF TILTON, ILLINOIS**



Storm Structure P4

Look April 10th 2019 toward northwest at detention basin and inlet to 36 inch storm sewer that discharges into Grape Creek near Southgate Drive. Reinforce erosion control. Consider staking straw bales along edges of concrete storm water flow pad. Final grade detention basin & establish turf as soon as possible!



Look easterly April 10th 2019 from Illinois Route 1 box towards downstream at log jam along Grape Creek approximately 75 feet downstream. **Communicate, coordinate and implement operation to remove trash from stream and banks.**



Look April 10th 2019 at debris jam and solid waste buildup along the northern bank 300 feet downstream Illinois Route 1 along Grape Creek. **Use pool leaf rake with pole to remove solid waste from stream & pick up litter on banks and legally dispose of.**



Look westerly toward upstream April 10th 2019 downstream of Illinois Route 1. Devise operation to safely remove debris and garbage from stream and stream banks then dispose of legally also prevent from further migrating into the stream.



Storm Structure P1

Look towards Northwest at erosion near 36-inch Southgate Drive storm sewer discharge April 10th 2019 from the south side of Grape Creek. Remove tires from stream and coordinate with Army Corp of Engineers regarding erosion stabilization and discharge.



Storm Structure P4

Look April 10th 2019 from the south side of stream towards the north across Grape Creek at erosion near 36 inch diameter storm sewer discharge from Southgate Drive. **Coordinate with Army Corp of Engineers regarding erosion stabilization and discharge.**



Look April 10th 2019 toward the northwest and upstream along Grape Creek from the south side of stream at log jam downstream of the 36 inch diameter Southgate Drive storm sewer discharge. **Remove debris from stream.**



Look Westerly April 10th 2019 towards upstream at area mapped as Palustrine Wetland System downstream of Southgate storm sewer discharge 250 to 350 feet



Look April 10th 2019 towards upstream along Grape Creek at area mapped as Palustrine Wetland System.



Look April 10th 2019 towards upstream along Grape Creek about a thousand feet upstream of Herschel Lake discharge at the Palustrine Wetland System on the map



Storm Structure Q2

Look southeasterly at screened culvert inlet and dam on Herschel Lake April 10th 2019. Coordinate with Engineer to establish vegetation and prevent erosion of exposed soil.



Storm Structure Q2

Look April 9th 2019 at sediment bar directly downstream of Herschel Lake discharge along Grape Creek



Storm Structure Q1

Look at water discharging from Herschel Lake into Grape Creek April 10th 2019. Add riprap under end pipe discharge to eliminate erosion.



Storm Structure Q1

Look from south side of Grape Creek at Herschel Lake discharging April 10th 2019. Coordinate with Engineer to establish vegetation and prevent erosion of exposed soil.



Look April 10th 2019 toward downstream at sediment deposit in Grape Creek approximately 35 to 80 feet downstream of Herschel Lake discharge



Look toward upstream at sediment bar and erosion along the bank approximately 100 feet downstream of Herschel Lake discharge April 10th 2019.



**Look April 10th 2019 at appliance fill in ravine at bend in Grape Creek approximately 500 ft. downstream of Herschel Lake discharge.
Communicate and coordinate to safely remove appliances and legally dispose of.**



Look April 10th 2019 toward downstream at debris jam across Grape Creek approximately 1,000 feet downstream of Herschel Lake discharge



Look at debris jam along Grape Creek approximately 1,000 feet downstream of Herschel Lake discharge April 10th 2019. Communicate and coordinate to safely remove solid waste debris from stream bank and legally dispose of.



Look toward downstream at gravel sediment bar approximately 2500 feet downstream of Herschel Lake discharge April 10th 2019



Look April 10th 2019 toward downstream at East Ross Lane Bridge over Grape Creek



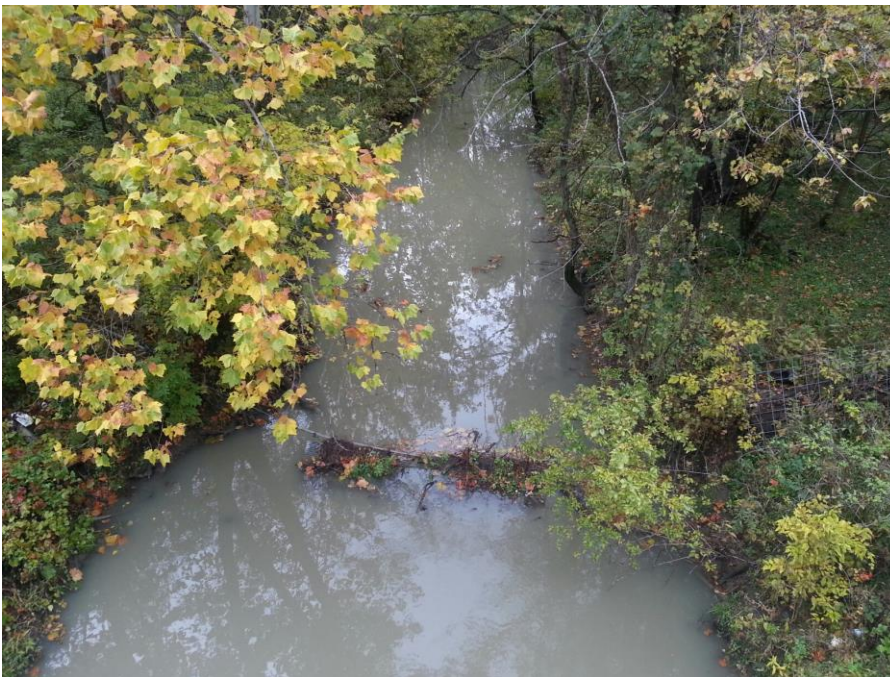
Look from the west bank of Grape Creek on the upstream side of East Ross Lane Bridge at cattle guard status April 10th 2019. **Communicate with Engineer and property owner to plan operation to implement regular debris removal.**



217-213-2022

josephgleisner@att.net

RE: OCTOBER 21, 2019 PHOTOGRAPHIC OBSERVATIONS OF GRAPE CREEK BETWEEN KINGS DALE AVENUE AND KING STREET FOR MONITORING OF SMALL MUNICIPAL SEPARATE STORM SEWER (MS4), VILLAGE OF TILTON, ILLINOIS



Look northerly from East Ross Lane Bridge October 21st 2019 at status of cattle guard upstream of bridge over Grape Creek. Determine source of cloudy stream water and eliminate.



Storm Structure V3

Look at status of riprap and inlet near Herschel Lake Park October 21st 2019



Look October 21st 2019 at status of boat launch into Herschel Lake



Look October 21st 2019 at erosion east of Herschel Lake Drive. Engineer plan, specification and cost estimate to force water into grated storm sewer manhole, repair ruts and establish turf. Delineate property line. Recommend grading be mow & pedestrian safe turf.



Storm Structure Q4

Look West at storm sewer discharge into Herschel Lake October 21st 2019. Engineer plan, specification and estimate to stabilize rip rap and erosion.



Look south October 21st 2019 at pipe near the southeast corner of King Street Bridge over Grape Creek. No water observed discharging from pipe after rain events. **Consider robotic video inspection of pipe.**



Storm Structure M1

Look northerly October 21st 2019 at storm sewer discharge near the northwest corner of King Street Bridge over Grape Creek. Notice material restricting flow during previous inspections removed.



Storm Structure S1

Look southerly at stormwater discharging into Grape Creek October 21st 2019 approximately 100 feet west of the southwest corner of King Street Bridge



Storm Structure G1

Look October 21st 2019 at storm sewer discharging near the southwest wing wall of Washington Avenue Bridge over Grape Creek



Storm Structure R8

Look from upstream towards downstream at Washington Avenue Bridge over Grape Creek October 21st 2019. Engineer plan and notice to remove sediment build-up; consider disposal in Votec deactivated sludge lagoon.



Storm Structure H1

Look South at storm sewer discharging into Grape Creek from Jefferson Street Right-of-Way October 21st 2019



Look October 21st 2019 from downstream of concrete abutments over Grape Creek where pedestrian bridge across Jefferson Street removed



Look northwest at riprap status at bend of Grape Creek North of Keegan Avenue October 21st 2019



Look North from Keegan Street Bridge over Grape Creek October 21st 2019



Storm Structure R9

**Look from downstream toward upstream at Keegan Street Bridge over Grape Creek
October 21st 2019**



Storm Structure R10

Look southeast October 21st 2019 at upstream side of Keegan Street Bridge over Grape Creek. **Communicate with Engineer to schedule lifting lid to safely inspect inside of sanitary manhole.**



Storm Structure E1

Look west at storm sewer discharging near the southwest corner of Keegan Street Bridge over Grape Creek October 21st 2019



Storm Structure J1

Look south at storm sewer discharge on the North End of Adams Street October 21st 2019. Mow top of north end of Adams Street sufficient so delineators are visible.



Look northwesterly October 21st 2019 at bend along Grape Creek located west of the North end of Adams Street approximately 350 feet. Appear grass clippings placed in erosion area at bend in creek.



Storm Structure L1

Look from downstream through concrete culvert October 21st 2019 at East Ross Lane / Grape Creek



Storm Structure K1

Look toward upstream through West barrel of culvert under West Ross Lane over Grape Creek October 21st 2019. Appears water is cloudy discharging from storm sewer. Use mapping to inspect drainage from upstream of discharge. Test, communicate plan and eliminate condition.



Storm Structure R16

Look toward southwest at upstream side of double barrel box culvert under East Ross Lane October 21st 2019



Storm Structure R11

Look West October 21st 2019 from downstream towards upstream at CSX railroad over Grape Creek



Storm Structure R12

Look from upstream towards downstream at CSX Railroad Bridge over Grape Creek October 21st 2019. Regularly police area and use telescoping pole with pool leaf rake to remove garbage and scum from stream and dispose of in legal manner.



Storm Structure C1

Look October 21st 2019 at storm sewer discharging South of Coachlight Mobile Home Park. Engineer prepared plan to video inspect storm sewer upstream of discharge and smoke sanitary sewer along Morrison Street. Safely implement.



Storm Structure D1

Look North at storm sewer discharge October 21st 2019 from Coachlight Mobile Home Park into Grape Creek. Engineer plan, specification and estimate to reset pipe and stabilize erosion at the discharge. Consider obtaining permission from owner and Army Corp of Engineers to find and cut 6 foot wide path to outfall structure without cutting trees or limbs larger than 3" diameter. Reset pipe end, install flexible temporary bypass pipe & sand bag edge stream, configure erosion control material, cure then remove bypass and sand bags.



Storm Structure R13

Look October 21st 2019 from Downstream towards Upstream at Kingsdale Bridge over Grape Creek. Regularly police area and use telescoping poles with pool leaf rakes to remove trash from stream.



Storm Structure R14

Look from upstream towards downstream October 21st 2019 at Kingsdale Bridge over Grape Creek.



217-213-2022

josephgleisner@att.net

RE: JANUARY 23, 2020 PHOTOGRAPHIC OBSERVATIONS OF GRAPE CREEK NEAR ILLINOIS ROUTE 1 (GEORGETOWN ROAD) FOR MONITORING OF SMALL MUNICIPAL SEPARATE STORM SEWER (MS4), VILLAGE OF TILTON, ILLINOIS



Look toward downstream January 23rd 2020 from Illinois Route 1 Bridge at washout in the bank at the southeast corner of Burger King parking lot. Significant erosion exists, communication required with restaurant property management to Engineer mitigation plan and obtain permits from Illinois Department of Transportation, Army Corps Engineers and Illinois Environmental Protection Agency. Regularly police area and use telescoping pole with pool leaf rake to safely remove garbage and scum from stream and dispose of in legal manner. Determine source of litter and eliminate.



Look toward downstream from Illinois Route 1 at Grape Creek at logjam below January 23rd 2020. Regularly police area and use telescoping pole with pool leaf rake to safely remove garbage and scum from stream and dispose of in legal manner. Determine source of litter and eliminate.



Look January 23rd 2020 toward downstream along Grape Creek at box culverts under Illinois Route 1. Communicate and coordinate with the Illinois Department of Transportation to keep culverts unobstructed. Regularly police area and use telescoping pole with pool leaf rake to safely remove garbage and scum from stream and dispose of in legal manner. Determine source of litter and eliminate.



217-213-2022

josephgleisner@att.net

**RE: JULY 24, 2019 VERMILION RIVER THROUGH TILTON
PHOTOGRAPHIC OBSERVATIONS FOR MONITORING OF
SMALL MUNICIPAL SEPARATE STORM SEWER (MS4),
VILLAGE OF TILTON, ILLINOIS**



Look July 24th 2019 southerly at the south bank of Vermilion River near abandoned General Motors site upstream of CSX Railroad at black high density polyethylene pipe discharging liquid into stream and PVC attachment loose in river bank. Communicate with property owner regarding purpose of pipe.



Look south at exposed concrete revetment along bank near General Motors site upstream of Arch CSX Railroad bridge July 24th 2019



Look westerly July 24th 2019 at condition of concrete revetment mat along south bank of Vermilion River approximately 100 to 200 yards upstream of the Tilton Arch CSX Railroad Bridge near General Motors site



Look toward downstream July 24th 2019 at the upstream face of Tilton Arch CSX Railroad Bridge. Set elevation benchmarks & cross sectional survey of upstream & downstream face of bridge and river bottom sufficient to estimate bridge hydraulics.



Look July 24th 2019 at green water structure, appears to be abandoned, on the south bank of Vermilion River upstream of Tilton Arch CSX Railroad Bridge. Communicate with property owner regarding purpose and details of structure



Look July 24th 2019 from downstream along the Vermilion River at the downstream face of Tilton Arch CSX Railroad Bridge



Look towards downstream July 24th 2019 at Tilton Sanitary Sewer Treatment Plant discharge into Vermilion River on the south bank. Village planning sewer treatment upgrades to eliminate discharge and/or improve the quality of discharge water.



Look toward south July 24th 2019 at Tilton Sanitary Sewer Treatment Plant discharge at Vermilion River. Village planning sewer treatment upgrades to eliminate discharge and/or improve the quality of discharge water.



Look towards the south from Vermilion River July 24th 2019 at drainage swale immediately downstream of Tilton Sewer Treatment Plant Discharge.



Look July 24th 2019 from Vermilion River toward the north at cut between river and pit. Flow is from pit towards river.



Look northerly at channel between Vermilion River and strip mine pit July 24th 2019. The flow is steady from the pit to the river also “no trespassing violators will be prosecuted” sign is posted at the entrance of the pit.



Look from near the south bank of the Vermilion River at the mouth of the North Fork River July 24th 2019



217-213-2022

josephgleisner@att.net

**RE: OCTOBER 21, 2019 PHOTOGRAPHIC OBSERVATIONS OF
STORM SEWER DISCHARGE TOWARD VERMILION RIVER FOR
MONITORING OF SMALL MUNICIPAL SEPARATE STORM
SEWER (MS4), VILLAGE OF TILTON, ILLINOIS**



Storm Structure B1

Look South October 21st 2019 at downstream end of culvert under McVey Street. Village coordinate with engineer to safely perform and record video robotic inspection of pipe.



Storm Structure B3.1

Look at sinkhole near brick block manhole on IDOT Right-of-Way October 21st 2019 near Tilton ball fields. **Communicate and coordinate with the Illinois Department of Transportation to inspect and remediate conditions.**



Storm Structure B3

Look at storm sewer discharge north of I-74 in ravine near Tilton Ballfields October 21st 2019. Sinkhole exists next to pipe and behind that manhole. **Notify Illinois Department of Transportation of conditions.**



Storm Structure A71

Look October 21st 2019 at storm sewer discharging into open ditch east of North F Street and north of East 1st Street



Storm Structure A3

Look at status of bar rack under abandon railroad spur north of East 1st Street October 21st 2019. Implement access improvement in accordance with Engineers plan, specifications & estimate also regularly inspect and clear debris.



Look October 21st 2019 at merging storm water from CSX railroad and north East 1st Street



Storm Structure A4

Look storm sewer discharging north of East 1st Street October 21st 2019



Storm Structure U1

Look October 21st 2019 at stormwater discharging from flared end section along north side 14th Street



Storm Structure A60

Look October 21st 2019 at storm sewer discharging into open ditch east of North F Street and near East 3rd Street Right-of-Way



217-213-2022

josephgleisner@att.net

**RE: FEBRUARY 19, 2020 PHOTOGRAPHIC OBSERVATIONS OF
STORM SEWER DISCHARGE TO VERMILION RIVER FOR
MONITORING OF SMALL MUNICIPAL SEPARATE STORM
SEWER (MS4), VILLAGE OF TILTON, ILLINOIS**



Look at tile from west near farm crossing west of Vermilion County Animal Shelter February 19th 2020. Consider video inspection of pipes & communication with County, IDOT, Village and owner. Engineer a plan, specifications and estimate to improve conditions.



Look northeasterly at sinkholes above storm sewer from Catlin Tilton Road West of County Animal Shelter February 19th 2020. Consider video inspection of pipes & communication with County, IDOT, Village and owner. Engineer a plan, specifications and estimate to improve conditions.



Look at storm sewer discharging February 19th 2020 between Vermilion County deactivated Vo-Tech Treatment Plant and Songer Cemetery



Look February 19th 2020 at upstream side of box culvert under Songer Cemetery Road



Look February 19th 2020 at downstream side of box culvert under Songer Cemetery Road



217-213-2022

josephgleisner@att.net

**RE: JUNE 3, 2019 SENIOR SPECIAL SOLID WASTE COLLECTION
PHOTOGRAPHIC OBSERVATIONS FOR MONITORING OF
SMALL MUNICIPAL SEPARATE STORM SEWER (MS4),
VILLAGE OF TILTON, ILLINOIS**

Observations Reported by Joseph J. Gleisner, P.E.

**Work Force: 2 Village Office Staff
5 Village Public Works Staff**

**Equipment: 1 Village Backhoe
2 Village Single Axle-Dump Trucks
1 Village One Ton Dump Truck**

Observations:

1. Village offered free curbside pickup for senior citizens that live in Tilton June 3rd 2019 beginning at 8 a.m. To be placed on list to have items picked up, residents call Village clerical staff for scheduling.
2. Village provided collection crew, heavy lifting equipment and trucks to haul **17 loads scaling 13.97 tons of waste** to local Brickyard Landfill. A one ton truck used to stockpile metal at public work yard for future recycling.
3. Village Trustee stated disabled residents also participated in the program.

Photographs Included Below:



**Look at Village backhoe loading single-axle dump truck with solid waste
June 3rd 2019 during free solid waste collection for seniors**



Look June 3rd, 2019 mid-morning at metal recycling temporary stockpile at Tilton Public Works facility from senior clean up this day



Look at crew manually loading back hoe bucket with solid waste during June 3rd 2019 clean-up day for seniors sponsored by Village



Look at typical solid waste pile set out June 3rd 2019 for the village of Tilton senior clean-up day



Look at Village single axle dump truck loaded with solid waste on scales at Republican landfill June 3rd 2019 for disposal of senior pick up of waste



Look at citizen collecting loose solid waste from ground June 3rd 2019 near the intersection of Illinois Route 1 and Grape Creek



217-213-2022

josephgleisner@att.net

**RE: JUNE 8, 2019 SOLID WASTE CLEAN-UP DAY
PHOTOGRAPHIC OBSERVATIONS FOR MONITORING OF
SMALL MUNICIPAL SEPARATE STORM SEWER (MS4),
VILLAGE OF TILTON, ILLINOIS**

Observations Reported by Joseph J. Gleisner, P.E.

Work Force: 1 Village Trustee

2 Volunteers from Second Church of Christ / Serve Together

6 Village Public Works Staff

1 Village Treasurer

1 Truck Operator with Thomas Excavation

Equipment: 1 Village Endloader

1 Village Backhoe

1 Village Mini-Excavator

4 Thomas Excavation Steel 30 cubic yard roll off containers

1 Thomas Excavation roll off container transport truck

1 Personnel Cart

Observations:

1. Between 7 am to 12 pm Saturday June 8, 2019 Tilton again offered annual opportunity for residents to bring excess solid waste to a temporary transfer zone at Public Works facility.
2. **115 residential clean-up loads** consisting of pick-up trucks some including trailers were accounted for at transfer zone check point by one Village Trustee and two Volunteers.
3. Residents along with Village Staff & equipment transferred solid waste into four steel 30 cubic yard containers.
4. Thomas Excavation equipment operator transported **six 30 cubic yard container loads** scaling a **total of 19.67 ton** to local Brickyard Landfill for disposal.

Photographs Included Below:



Look at checkpoint at the entrance of the temporary transfer zone at Public Works Tilton facility during June 8th 2019 resident clean-up opportunity



Serve Together Vermilion County volunteers from Second Church of Christ at check point



Look southwesterly June 8th 2019 at Village backhoe and end loader being utilized for Village resident cleanup effort at transfer zone



Look northwesterly at Village staff, backhoe & end loader transferring clean-up items into solid waste containers.



Look at Thomas Excavating loading 30 cubic yard steel container onto transport truck



Look at tarped Thomas Excavating roll-off truck transporting loaded solid waste container toward local landfill during Village residential cleanup effort



217-213-2022
josephgleisner@att.net

**RE: SUMMER & FEBRUARY 19 & 25th, 2020 PUBLIC WORKS
PHOTOGRAPHIC OBSERVATIONS AND STREET SWEEPING
LOGS FOR MONITORING OF SMALL MUNICIPAL SEPARATE
STORM SEWER (MS4), VILLAGE OF TILTON, ILLINOIS**



Look North at Village two-man crew using Vactor truck to clean storm sewer drainage system along the western side of H Street south of West 5th Street. Village staff concentrated storm sewer cleaning program efforts generally north of Norfolk Southern Railroad and east of CSX Railroad. Using mapping, Engineer measures 130 storm structures and 19,870 feet of pipe in this area. Use Sewer Log Sheet included in Attachment G to comply with measurable reporting requirements of IEPA.

BASE MAP BOOK OF
VILLAGE OF TILTON, ILLINOIS
STORM & SANITARY SEWER

Prepared by and Property of
GLEISNER ENGINEERING

217-213-2022
josephgleisner@att.net

June 12, 2019

This document is intended for reference by Village sewer maintenance crews that are subject to observation by Gleisner Engineering. The accuracy of this information is not reported absolute. Use of this document is not permitted without written permission from Gleisner Engineering. In accordance with the IEPA General Permit ILR40 for MS4s, this mapping system is being withheld for security reasons; distribution or copying of this mapping system is not permitted without written authorization from Gleisner Engineering.

The intended purpose for preparing this document is to require sewer maintenance crews to account and record progress of maintenance operations and track illicit discharges on log sheets provided, also legibly sketch sewer corrections and findings for mapping updates by Gleisner Engineering in accordance with permits and requirements of Illinois Environmental Protection Agency.

When requested this document shall be immediately returned to Gleisner Engineering for reporting and sewer mapping updates.

Cover letter from book prepared by Gleisner Engineering for compliance reporting and submits to Village Authorities including Index & Sewer Maps, Sewer Cleaning Log sheet and Illicit Discharge Tracking sheet. Regularly complete log sheets also map markups and return to Gleisner Engineering for MS4 reporting!



Sanitary Structure 69.2

Sewer Inspection by Village Staff using recent addition of robotic video equipment truck



Sanitary Structure 69.2

Look westerly February 19th 2020 at Village sewer video inspection vehicle looks into sewer pipe. Excessive flow appears to exist in sanitary.



Look westerly at Village salt shed February 19th 2020. Provide Engineer with Village Salt Purchase Quantities since 2017 for reporting.



Look easterly February 19, 2020 at Village fuel dispensers



Look February 19, 2020 at chemical stockpile and oil containers in Village Public Works garage



Look February 19th 2020 at used oil containment area in Village Public Works garage for future recycling



Look Westerly February 19th 2020 at Village equipment wash down area at Public Works garage



Look northerly February 25th 2020 at Village street sweeper stockpiling sweepings on pile near Public Works facility. Appears to be approximately 5.5 cubic yards on stockpile; 9 days of sweeping streets logged by Village Staff: **Use Sweeper Log Sheet included in Attachment G to comply with measureable reporting requirements by IEPA. Provide Engineer with ultimate location of material disposal.**

Sweeper

Location	Driver	Date	Status
CATLIN TIGER POND	DOUL	7-23	✓
14TH 137TH GREENSB	DOUL	1-23	✓
SOUTH GATE DRIVE	DOUL	1-23	✓
CATLIN TIGER POND	DOUL	2-26	✓
5TH ST	DOUL	2-26	✓
6TH ST	DOUL	2-28	✓
Ross Lane	DOUL	2-28	✓
SOUTH GATE	DOUL	2-28	✓
14TH ST	DOUL	2-28	✓
5TH ST	DOUL	2-28	✓
1ST ST	DOUL	7-6	✓
2ND ST	DOUL	7-6	✓
L ST	DOUL	7-6	✓
5TH ST	DOUL	7-8	N.F.
BRENTWOOD	DOUL	2-4	✓
LANE ST	DOUL	2-4	
WEST RAMP RD	DOUL	2-4	
W 16TH	DOUL	2-4	
1ST AVE	DOUL	2-5	
E RAMP RD	DOUL	2-5	
RUNDABOUT	DOUL	2-5	
E 16TH	DOUL	2-5	
SOUTH GATE DR.	DOUL	2-6	
L ST	DOUL	2-6	
1ST AVE	DOUL	2-6	

Notes:

VILLAGE 2019 / 2020 STREET SWEEPING LOG SHEET 1

Sweeper

Location	Driver	Date	Status
2ND AVE	Douk	2-6	
1ST	Douk	4-8	
2ND	Douk	4-8	
L ST	Douk	4-8	
5TH	Douk	5-17	
TILTON ROAD	Douk	5-17	
H1 ST	Douk	5-17	
1ST	Douk	5-17	
2ND.	Douk	5-17	
G ST	Douk	5-17	
EMERSON BRIDGE	Douk	5-17	
14TH	Douk	5-20	
1ST AVE	Dm	5-20	
14TH ST	Dm	5-20	
RAMP ROAD	Dm	5-20	
LANEY ST.	Dm	5-20	
ROSS LANE	Dm	5-21	
KING ST	Dm	5-21	
5TH	Dm	11-18	
TILTON ROAD	Dm	11-18	
EL DEL	Dm	11-18	
14TH	Dm	11-18	
LANE	Dm	11-18	
RAMP RD.	Dm	11-18	
1ST AVE	Dm	11-18	

Notes:

VILLAGE 2019 / 2020 STREET SWEEPING LOG SHEET 2

Sweeper

Location	Driver	Date	Status
L ST	DH	11-19	✓
1 ST	DM	11-19	✓
2 RD	DM	11-19	✓
H ST	DM	11-17	✓
G ST	DM	11-19	✓
W Ross Lane	DM	11-19	✓
South King	DM	11-19	✓
ILLIANA DR.	DM	11-9	✓
5TH	DM	3-2-20	✓
TILTON ROAD	DM	3-2-20	✓
1 ST	DM	3-3-20	✓
2 RD	DM	3-3-20	✓
L ST	DM	3-4-20	✓
H ST	DM	3-4-20	✓
G ST	DM	3-4-20	✓
14TH	DM	3-5-20	✓
LANE	DM	3-5-20	✓
W 15TH	DM	3-5-20	✓
RAMP RD	DM	3-5-20	✓
1ST AVE	DM	3-5-20	✓
SOUTHCOLE	DM	3-5-20	✓
ROSS LANE	DM	3-6-20	✓
TILTON ROAD	DM	4-24-20	✓
5TH ST	DM	4-24-20	✓
L ST	DM	4-24-20	✓

Notes:

VILLAGE 2019 / 2020 STREET SWEEPING LOG SHEET 3



217-213-2022

josephgleisner@att.net

RE: MAY 22, 2019 PHOTOGRAPHIC OBSERVATIONS OF STORM SEWER WATERSHED "C" TOWARD GRAPE CREEK GENERALLY SOUTH OF N&S AND WEST OF CSX RAILROADS WITH REGARD TO MONITORING OF SMALL MUNICIPAL SEPARATE STORM SEWER (MS4), VILLAGE OF TILTON, ILLINOIS



Look into Storm Sewer Manhole C3 draining slowly & surcharged with water at the southeast corner of the intersection of Henson and Glendale. Clean & video inspect storm sewer line downstream and upstream manhole while Engineer observes. Prevent storm sewer and surface drainage of this area from mixing with the sanitary sewer system.



Look into Storm Manhole C4 draining slow and surcharged at the southeast corner of the intersection of Glendale and Emerson May 22nd 2019. Clean and video inspect pipe line downstream and up stream of manhole during observation by engineer. Ensure storm & sanitary sewer are separated.



Look northeasterly May 22nd 2019 at Storm Sewer Manhole C8 6in below grade with a 22 and 3/4 inch cover ring diameter at the northeast corner of the intersection of Morrison and Glendale. Use vactor truck to clean storm sewer downstream & upstream towards all the way to Grape Creek and video inspect line. Prevent storm sewer and surface drainage of this area from mixing with the sanitary sewer system.



Look May 22nd 2019 in Storm Sewer Manhole C8 at possible conflict sanitary line in storm sewer manhole



217-213-2022
josephgleisner@att.net

REPORT 1

RE: MACH 1 STORE # 24 EROSION CONTROL INSPECTION & OBSERVATIONS, TILTON, ILLINOIS

Report Date: June 17, 2019

Observations Reported by Joseph J. Gleisner, P.E.

Work Force on-site June 14: 2 Equipment Operators of Midwest Asphalt
 1 Construction Manager of AKRA Builders

Equipment on-site June 14: 2 scrapers hitched tractors
 1 excavator
 1 dozer
 1 water tanker
 1 pavement sweeper
 1 sheep foot compactor
 1 disc tiller
 1 backhoe

Observations:

- 1) Inspection made per request of Village and IEPA General MS4 permits authorities.
- 2) Gleisner received Farnsworth Group project site plans May 31, 2019.
- 3) June 14 Gleisner visits & photographs site:
 - Two scraper hitched tractors moving soils from Mach 1 site north to Village property at southeast corner of IL Rt. 1 and 14th St.
 - Silt fence installed around perimeter of site.
 - Stone stabilized construction entrance placed on north side site.
 - Water tanker utilized to moisten soils for dust control.
 - AKRA Builders has a Storm Water Pollution Prevention Plan prepared by Farnsworth Group in field office.
- 4) Near dusk Saturday June 15 Gleisner photographs area near construction entrance where soils are removed from Ramp Road pavement.

- 5) June 17 Gleisner requests, receives and reviews Storm Water Pollution Prevention Plan from Project Engineer Patrick Moone of Farnsworth Group. Moone to be placed on inspection report e-mail list.
- 6) Gleisner filled out Village Erosion & Sediment Control Inspection Checklist and Inspection Report and bound to this report along with photographs.



Look northeasterly June 14th 2019 at Future Home of Mach1 Convenience Store from the southeast corner of the intersection of Illinois Route 1 and 16th Street



Look west June 14th 2019 at water truck being utilized to control dust along haul road for earth-moving operation.



Look June 14th 2019 toward southwest at silt fence around the north and east perimeter of Mach1 site.



General view toward Northwest June 14th 2019 from the intersection of First Avenue and 16th Street at Mach 1 fuel station site at scraper hitched tractors grading and silt fence installed around the perimeter.



Look southerly June 14th 2019 at stone construction entrance placed on the north side of Mach1 site. View is from Ramp Road.



Look June 14, 2019 at soil placement on Village property north of 14th St. between IL Rt.1 & 1st St.



Look June 14, 2019 southerly from 14th Street between Illinois Route 1 and 1st Avenue at drain and Village property where excess soil is being placed off-site from Mach 1 site.



Look west July 15th 2019 at pavement along Ramp Road where soil appears to have been swept from the pavement after previous workday.

EROSION AND SEDIMENT CONTROL INSPECTION CHECKLIST

Village of Tilton, IL

INSPECTION REPORT

Sheet 5 of 6

Project Name: Mach 1, Tilton, IL File No. See Observation Report 1

Inspection Date: 6/14/19 Time: 11:12 am

Inspected by: Joseph Gleisner

STAGE OF CONSTRUCTION

☐ Pre-Construction Conference ☒ Rough Grading ☐ Finish Grading
☐ Clearing and Grubbing ☐ Building Construction ☐ Final Stabilization

INSPECTION CHECKLIST

Yes No N/A

☐ ☐ ☒ Have all denuded areas requiring temporary or permanent stabilization been stabilized? Seeded? Yes/no Mulched? Yes/no Graveled? Yes/no

☒ ☐ ☐ Are soil stock piles adequately stabilized with seeding and/or sediment trapping measures?

☐ ☐ ☒ Does permanent vegetation provide adequate stabilization?

☐ ☐ ☒ Have sediment trapping facilities been constructed?

☒ ☐ ☐ For perimeter sediment trapping measures, are earthen structures stabilized?

☐ ☐ ☒ Are sediment basins installed where needed?

☒ ☐ ☐ Are finished cut and fill slopes adequately stabilized?

☐ ☐ ☒ Are on-site channels and outlets adequately stabilized?

Yes	No	N/A	
<input type="checkbox"/>	<input type="checkbox"/>	<input checked="" type="checkbox"/>	Do all operational storm sewer inlets have adequate inlet protection?
<input type="checkbox"/>	<input type="checkbox"/>	<input checked="" type="checkbox"/>	Are storm water conveyance channels adequately stabilized with channel lining and/or outlet protection?
<input type="checkbox"/>	<input type="checkbox"/>	<input checked="" type="checkbox"/>	Is in-stream construction conducted using measure to minimize channel damage?
<input type="checkbox"/>	<input type="checkbox"/>	<input checked="" type="checkbox"/>	Are temporary stream crossings of non-erodible material installed where applicable?
<input type="checkbox"/>	<input type="checkbox"/>	<input checked="" type="checkbox"/>	Is necessary restabilization of in-stream construction complete?
<input type="checkbox"/>	<input type="checkbox"/>	<input checked="" type="checkbox"/>	Are utility trenches stabilized properly?
<input checked="" type="checkbox"/>	<input type="checkbox"/>	<input type="checkbox"/>	Are soil and mud kept off public roadways at intersections with site access roads?
<input type="checkbox"/>	<input type="checkbox"/>	<input checked="" type="checkbox"/>	Have all temporary control structures that are no longer needed been removed?
<input type="checkbox"/>	<input type="checkbox"/>	<input checked="" type="checkbox"/>	Have all control structure repairs and sediment removal been performed?
<input type="checkbox"/>	<input checked="" type="checkbox"/>	<input type="checkbox"/>	Are properties and waterways downstream from development adequately protected from erosion and sediment deposition due to increases in peak storm water runoff? (See Comments)

Comments: Gleisner striving with Village to obtain Army Corp of Engineers permission of IEPA Water Quality Certificate then implement measures to stabilize erosion at storm sewer discharge into Grape Creek also request responsible contractors strengthen erosion control in detention basin downstream & establish turf along adjacent road projects. Establish erosion control at fill site.

Verbal/Written notification given to: Mayor Phillips & Engineer Moore

Report by: Joseph Gleisner Date: 6/14/19

Joseph J. Gleisner

sheet 6 of 6



217-213-2022

josephgleisner@att.net

June 28, 2019

**RE: MAP REQUEST & DRAINAGE STRUCTURE OBSERVATIONS
AT NORFOLK SOUTHERN RAILROAD, VILLAGE OF TILTON,
ILLINOIS**

**Jason Beaken
Norfolk Southern Railroad,**

Per our conversation this morning, I'm consulting with Tilton Illinois regarding analyzing potential Right-of-Way Vacation of West 8th Street between L Street and J Street north of the N&S rail yard. I was notified by the warehouse owner north of the rail yard about a drainage structure on N&S Right-of-Way. They attempt to pump water toward a surface tile on their property when water ponds. The tile may discharge into the drainage structure. I safely visited the yard June 27th and along with N&S maintenance personnel on-site looked into the structure. Photographs and map are included in this report for your review.

I am requesting mapping information regarding drainage facilities along this railroad yard and entire Right-of-Way through Tilton. I maintain a mapping system of the drainage facilities in the Tilton area and believe the village and railroad systems are connected. Thank You for your consideration.

Respectfully Submitted,

Joseph J. Gleisner, P.E.

Area report
to regularly
pond water

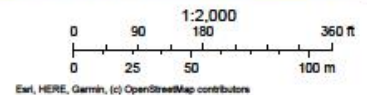
Approximate
location of
sump pump
to tile SEE
PHOTO C

Location of
drainage
structure
SEE PHOTO
A & B



June 28, 2019

Parcel Info



Copyright 2017 Vermilion County, IL and Bruce Harris and Associates

SITE MAP FROM VERMILION COUNTY GIS & NOT BASE ON A LAND SURVEY



Photo A

Look southeasterly June 25th, 2019 at existing drainage structure in Norfolk Southern Railroad Right-of-Way



PHOTO B

Look June 27th 2019 into storm manhole on Norfolk Southern Railroad Right-of-Way near yard in Tilton. Near north is up on image. Appears to be clay tiles extending northeasterly and southeasterly; also possible drain port north where brick appear missing.



PHOTO C

Look June 25th 2019 at sump bucket reported used by mini warehouse owner to pump often standing water toward tile



217-213-2022
josephgleisner@att.net

OBSERVATION REPORT 2

**PROJECT: SOUTHGATE DRIVE DISCHARGE
EROSION STABILIZATION, GRAPE CREEK
STORM SEWER OUTFALL, TILTON, IL**

REPORT UPDATED: October 28, 2019

WEATHER: fall weather moist ground

WORK FORCE: Mayor Phillips

1 Engineer

Paul & 3 to 4 four workers of Offutt Development

1 Langley truck driver

REPORTED BY: Joseph J. Gleisner, P.E.

**EQUIPMENT: 1 track skid steer, 1 wheeled fork lift, 1 wheel skid steer,
1 wheel fork lift, 1 track mini-excavator & 1 trailer with ton truck, 1
backhoe also two tandem delivery trucks**

Observations and Discussions:

- 1. October 10 Gleisner met with Paul Offutt and Mayor Phillips on-site to discuss project logistics, quantities and permit requirements.**
- 2. October 19 Gleisner informed by phone call at end of work day from David with Offutt has been on-site excavating and hauling in material for 3 work days. Gleisner went to site.**
- 3. No work on-site Oct. 20 through 22. Though Gleisner met Paul and David of Offutt Monday October 21 on-site. Paul texted Gleisner picture of recycled concrete stockpile on-site that was placed in bottom of storm sewer washout trench and David said 5 one ton loads of soil hauled into site for equipment haul road. Gleisner explained this material must be removed.**

4. Oct. 23 three Offutt workers on-site. Gleisner string lines layout and communicates grade also operates cement vibrator for rip rap and concrete grout placement. 8 cubic yards concrete utilized prior to flared end section grade. Gleisner obtained connections and seal material from Big R then temporary storm water temporary by-pass assembled on-site and installed. Paul Offutt and Mayor Phillips on-site.
5. Oct. 24 four Offutt workers used bituminous mastic on pipe joint, set flared end section also placed concrete collar joint exterior and placed rip rap stone and 7 cubic yards of cement grout graded and vibrated into voids. Gleisner held layout grade. Mayor Phillips on-site.
6. Oct. 25 three Offutt workers on-site removed haul path soils and grading rip rap into swale and placed 6 cubic yards of concrete grout. Fence post straightened with mini-excavator and stabilized with concrete. Temporary by-pass piping removed in preparation for rain.
7. Oct. 26 Gleisner inspected flow of discharge during rain event.
8. No work on-site Sun. Oct 27th.
9. October 28th three Offutt works on-site utilizing backhoe, mini-excavator, track skid steer and dump truck to remove two tandem loads of temporary haul road soil and one load of rip rap off site. Reinstall fence. One tandem load of crushed concrete placed on auto body facility parking area disturbed by stockpiles and equipment maneuvering.

PHOTOGRAPHIC OBSERVATIONS:



Photo provided by Offutt of recycled rubble concrete and stone rip rap stockpiles site prior to placement



**Look at temporary by-pass fitting prior to installation into storm sewer pipe
October 23rd 2019**



**Look October 23rd at temporary bypass installed in 36 inch diameter storm
sewer prior to grouting riprap**



Look at temporary bypass fitting installed in 36 inch diameter storm sewer prior to riprap grouting



Look October 23rd 2019 at site with bypass pipe and concrete curing at end of work day



Look October 23rd 2019 at tandem truck with tag wheels delivering stone rip-rap to site



Look October 24th 2019 at sky track and tracked skid-steer dragging concrete flared end section 36 in diameter through fence



Look October 24th 2019 at mini excavator and fork lift handling and maneuvering 36 in diameter reinforced concrete flared end section for reuse at storm sewer discharge



Look October 24th 2019 at mastic placed at joint prior to flared end section being installed on 36 inch diameter storm sewer discharge



Look northerly October 24, 2019 at 36 inch diameter concrete flared end section, temporary bypass pipe and equipment while in propped and leveled into position on riprap prior to grouting operation



Look October 24th 2019 northwest at concrete and riprap mixing with vibrator, manual shoveling, mini excavator placing rip rap and skid steer delivering cement aggregate mix around flared end section to stabilize and anchor



Look October 24th 2019 at concrete collar being placed on the exterior joint of flared end section and storm sewer pipe



Look October 24th 2019 towards the northwest at status of end section repair and dissipation riprap grouting at end of work day



Look northeast October 25th 2019 at crew mixing grout into graded riprap drainage swale voids



Look October 25th 2019 toward the northeast at the status of discharge and drainage swale riprap and concrete shape status at end of work day after temporary by-pass piping removed in anticipation of precipitation



Look North October 26th 2019 at Southgate Drive discharge during rain event



Look northeasterly October 28th 2019 at wheel loader backhoe, tandem dump truck and rubber track skid steer being utilized to during site restoration effort



Look northeast October 28th 2019 at rubber tracks skid steer grading a load of crushed recycled concrete on disturbed auto body repair facility parking area



Look southwest at access to discharge after surface restoration efforts October 28th 2019



217-213-2022

josephgleisner@att.net

**RE: SOLID WASTE CONTAINER PHOTOGRAPHIC
OBSERVATIONS FOR MONITORING OF SMALL MUNICIPAL
SEPARATE STORM SEWER (MS4), VILLAGE OF TILTON,
ILLINOIS**

Along with photographic inspections; recommend Village review Solid Waste Containment Ordinance, prepare location map of containment areas in Tilton then expand upstream throughout Grape Creek Watershed. Continue communication with authorities regarding Inspection of Solid Waste transport equipment mobilizing along IL Route 1 and Interstate 74.



Look northerly January 28th 2020 at Solid Waste containment area at new Mach 1 convenience store



Look southeast January 28th 2020 at solid waste containers on the east side of Vermilion Chevy Buick GMC auto dealer. Ensure lids are closed on dumpsters and solid waste is contained in accordance with Village ordinances.



Look Southwest early at solid Waste containers on the west side of Stock + Field January 28th 2020. Ensure lids are closed on dumpsters and solid waste is contained in accordance with Village ordinances.



Look east at solid waste containment area on the northeast side of Burger King January 28th



Look at solid waste containment area near southeast corner of True Grit January 28th, 2020; no dumpster in area



Look south at solid waste containment area on the south side of Burke Spring & Alignment January 28th 2020. Ensure lids are closed on dumpsters and solid waste is contained in accordance with Village ordinances.



Look northerly January 28th at solid waste containment area on the south side of JB Hawks Tobacco and Vape



Look southeast at solid waste container at the southeast side of travel trailers service and sales January 28, 2020.



Look south at solid waste containment area January 28th 2020 on the west side of Riches Restaurant. Ensure lids are closed on dumpsters and solid waste is contained in accordance with Village ordinances.



Look south at solid waste containment area on the south side of Revive Hair Salon, Tax Service and Carla's Gaming January 28th 2020



Look northeasterly at solid waste container at Toyota dealer. Ensure lids are closed on dumpsters and solid waste is contained in accordance with Village ordinances.



Look west January 28, 2020 at solid waste containers on the northwest side of Truscelli Collision Repair. Ensure lids are closed on dumpsters and solid waste is contained in accordance with Village ordinances.



Look westerly January 28th 2020 at solid waste container at the southwest corner of Tilton Pro Lube



Look north January 28th 2020 at solid waste containers at Mike's Grill, Chill and mini warehouses



Look easterly January 28th 2020 at dumpster on the west side of Carnegie. Ensure lids are closed on dumpsters and solid waste is contained in accordance with Village ordinances.



Look west January 28th 2019 at solid waste containment area on the north side of Casey's General Store. There appears to be stain on pavement from container area. **Ensure dumpster is leak proof, lids are closed and solid waste is contained in accordance with Village ordinances.**



Look northerly January 28th 2020 at solid waste containment area on the northwest side of Auto Selfie Car Wash



Look southwesterly at solid waste containers on the north side of Danville Small Animal Clinic near the Groom Room



Look northeasterly January 28th 2019 at solid waste dumpster on the west side of MH equipment. Ensure lids are closed on dumpsters and solid waste is contained in accordance with Village ordinances.



Look northwesterly January 28th at 2020 at dumpster on the west side of Calvary Baptist Church



Look south at solid waste containment area on the southwest corner of Family Dollar January 28th 2020



Safely police area along Grape Creek banks near County Market Grocery Store pick-up and properly dispose of litter and contain litter



Look south at dumpster next to Pro Logistics January 28th 2020



Look east January 28th 2020 at dumpster on the west side of AutoZone



Look east at waste dumpsters on the west side of County Market January 28th



Look northeasterly at solid waste container on the west side of County Market Tilton January 28th 2020. Ensure solid waste is contained in accordance with Village ordinance.



Look southeast at dumpsters on the west side of Anytime Fitness Chuck in clouds Vape Shop Green Jade Restaurant and Jokers Gaming January 28th



Look westerly January 28th 2020 at solid waste dumpster containment area at Circle K. Ensure lids are closed on dumpsters and solid waste is contained in accordance with Village ordinances.



Look northeasterly January 28th 2020 at dumpsters on the west side of Monical's Pizza. Ensure lids are closed on dumpsters and solid waste is contained in accordance with Village ordinances.



Look northeasterly at dumpster on the west side of Southside Church of Nazarene January 28th 2020



Look southerly January 28th 2020 at dumpster and toter on the southwest side of Verizon. Ensure lids are closed on dumpsters and solid waste is contained in accordance with Village ordinances.



Look easterly January 28, 2020 at dumpsters located on the west side of Dollar Tree, AT&T and Dotty's Gaming. Ensure lids are closed on dumpsters and solid waste is contained in accordance with Village ordinances.



Look northerly January 28th 2020 at dumpster on the west side of Dollar General. Ensure lids are closed on dumpsters and solid waste is contained in accordance with Village ordinances.



217-213-2022

josephgleisner@att.net

**RE: JUNE 22, 2019 MIDDLE FORK RIVER UPSTREAM OF
TILTON PHOTOGRAPHIC OBSERVATIONS FOR MONITORING
OF SMALL MUNICIPAL SEPARATE STORM SEWER (MS4),
VILLAGE OF TILTON, ILLINOIS**



**Look at concrete boat ramp into Middle Fork River in Kennekuk County
Park June 22nd 2019**



Look easterly June 22nd at water discharging into Middle Fork River downstream of Kennekuk Park boat ramp



Look June 22nd 2019 from downstream towards upstream at Windfall Creek downstream of Lake Mingo Dam in Kennekuk discharging into the Middle Fork River. Windfall Creek water clarity quality visible at mouth of Middle Fork River.



Look June 22nd 2019 towards downstream along Middle Fork River at stone gabion baskets on west bank near deactivated power plant coal ash ponds. **Communicate with site authorities to determine status of permits for proposed erosion control.**



Look southwesterly June 22nd 2019 from Middle Fork River west bank near deactivated power plant



Look towards the western bank of Middle Fork River near deactivated power plant coal ash ponds at bank erosion and orange substance



Look close June 22nd 2019 at orange substance along eroded bank near deactivated power plants along Middle Fork River



Look at rip-rap along the bank of Middle Fork River near deactivated power plant June 22nd 2019



Look at structure June 22nd 2019 along the western bank of Middle Fork River near deactivated power plant. **Communicate with site authorities to determine the purpose of structure.**



217-213-2022
josephgleisner@att.net

**RE: JULY 24, 2019 VERMILION RIVER FROM SALT FORK TO
NORTH FORK RIVERS PHOTOGRAPHIC OBSERVATIONS FOR
MONITORING OF SMALL MUNICIPAL SEPARATE STORM
SEWER (MS4), VILLAGE OF TILTON, ILLINOIS**



**Look south from Salt Fork River at tributary flowing July 24th 2019 near
Vermilion River also at canoe and kayak launch site for Kickapoo Outfitters**



Look towards upstream July 24th 2019 at downstream face of Shangri La Road Bridge over Vermilion River



Look July 24th 2019 at foam along Vermilion River



Look southerly at camper wedged into the south bank of Vermilion River near Farmland Reserve Inc. property July 24th 2019. This camper & license plate were included in previous annual reporting.



Look Northerly July 24th 2019 along north bank of Vermilion River at open baffle drainage pipe discharging into the river from Mike MC Cormick property



Look July 24th 2019 at tire in sediment of Vermilion River northern bank where tributary meets the river near Mike MC Cormick TRTE property



Look July 24th 2019 at plastic debris along Vermilion River upstream of Interstate 74



Look at condition of riprap under Interstate 74 Bridge where soffit discharges water from fall on to bank of Vermilion River



Look July 24th 2019 at soffit under Interstate 74 Bridge near Vermilion River



Look July 24th 2019 towards upstream at Interstate 74 Bridge over Vermilion River



Look July 24th 2019 at rubber tire in bank of river. Many tires are now apparent during low-flow season due to dam removals downstream in Danville. Considered organizing crews with canoes and buoyancy hoisting devices to lift rubber tires, load on canoes and removed from river and properly recycle



Look towards upstream along Vermilion River at brick piers and steel structure collapse July 24th 2019. **Determine owner of structure.**



Look toward downstream on Vermilion River July 24th 2019 at overhead utility structures. **Communicate with utility company to inspect condition of bank near structures to ensure structural stability. Give notice to Army Corps of Engineers to obtain permission prior to discharge of erosion stabilization material onto bank**



Look south July 24th 2019 along the south bank of Vermilion River at storm water discharge creating a waterfall exposed probably due to dam removal downstream lowering water elevation. Consider communication with property owner and Army Corp of Engineers & Illinois Department of Natural Resources and Environmental Protection Agency with regard too enhancement & stabilize erosion. Obtain precise location. Test quality of water discharging. Obtain permits.



Look westerly July 24th 2019 at concrete boat ramp in Ellsworth Park on the north bank of the North Fork River



Look July 24th 2019 at void under concrete boat ramp in Ellsworth Park in to North Fork River; also Danville jurisdiction storm sewer discharge. Communicate with Danville to inspect and communicate with Army Corp of Engineers for permits to repair void under boat ramp. Consider pressure grouting mixture into void during low river flow.



217-213-2022

josephgleisner@att.net

RE: 2019 / 2020 DANVILLE DAM REMOVAL FROM VERMILION RIVER DOWNSTREAM OF TILTON PHOTOGRAPHIC OBSERVATIONS FOR MONITORING OF SMALL MUNICIPAL SEPARATE STORM SEWER (MS4), VILLAGE OF TILTON, ILLINOIS



Look westerly & down from the South Street west bank of the Vermilion River April 6th 2019 at status of Danville Dam removal



Look April 21st 2019 from South Street Bluff down at status of Danville Dam removal from Vermilion River



Look June 14th 2019 from the bank of South Street on the east side of Vermilion River at status of Danville Dam removal



Look at Danville Dam removal status June 19, 2019



Look June 29th 2019 from downstream towards upstream at status of Danville dam removal from Vermilion River



Look westerly from South Street bluff August 16th 2019 at status of Danville Dam removal from Vermilion River



Look westerly August 27th 2019 from South Street bluff at status of Danville Dam removal from Vermillion River



Look Westerly from east bank of Vermillion River from South Street at status of Danville dam removal September 13th 2019



Look easterly November 26th 2019 at Danville dam removal from Vermilion River



Look east November 26th 2019 at status of Danville dam removal from Vermilion River



Look toward downstream November 26th 2019 at status of dam removal from Vermilion River



Look southerly November 26th 2019 at storm sewer discharging near the southeast corner of Illinois Route 1 Bridge over Vermilion River



Look north November 26th 2019 at Vermilion River under Memorial IL Route 1 Bridge



Look westerly January 23rd 2020 from South Street Bluff at status of removed Danville Dam



217-213-2022
josephgleisner@att.net

**RE: 2019 / 2020 ELLSWORTH PARK DAM REMOVAL FROM
NORTH FORK RIVER PHOTOGRAPHIC OBSERVATIONS FOR
MONITORING OF SMALL MUNICIPAL SEPARATE STORM
SEWER (MS4), VILLAGE OF TILTON, ILLINOIS**



**Look at the status of the Ellsworth Park Dam removal from the North Fork
River March 12th 2019**



Look northwesterly April 6th 2019 at status of the Ellsworth Park Dam removal from the east bank of North Fork River



Look southeasterly from east bank of North Fork River at Ellsworth Park Dam removal status April 6th 2019. Safely remove tire and rebar immediately from drainage way and legally dispose of.



Look from the west bank of the North Fork River towards upstream at status of the Ellsworth Park Dam removal April 6th 2019



Look April 6th 2019 from the west bank of the North Fork River upstream of dam removal project in Ellsworth Park at the U.S. 150 Bridge over the North Fork River. Water flowing towards and under center pier also demolition debris exposed due to lower water elevation. **Remedy conditions.**



Look April 21st 2019 from the east bank of the North Fork River at the Ellsworth Park Dam removal status



Look westerly June 9th 2019 from parking lot east of Ellsworth Park Dam at equipment & access stone placed



Look westerly June 9th 2019 from the east side of Ellsworth Park Dam at status of dam removal from North Fork River



Look June 9, 2019 from Ellsworth Park Dam towards upstream at North Fork River flowing under Martin Luther King US 150 Bridge



Look east June 9th 2019 from the west bank of North Fork River at status of the Ellsworth Park Dam removal



**Look June 14th 2019 at stream flow diverted underneath center pier concrete wall of Martin Luther King (US150) bridge over North Fork River).
Communicate and remedy condition.**



Look June 14th 2019 at reinforcement-bar protruding from concrete debris under Martin Luther King (us-150 Main Street Bridge) on North Fork River east of center pier



Look from downstream towards upstream June 29th 2019 at status of Danville jurisdiction abandoned Mill Street Bridge over the North Fork River. Communicate to determine if hazards exist to river users & eliminate.



Look northerly September 13th 2019 from east bank of North Fork River at pipe exposed across North Fork River. **Determine purpose of pipe and eliminate hazard.**



Look September 13th 2019 at pipe line across North Fork River exposed upstream of us 150 Martin Luther King Drive Bridge. **Dam removals exposed hazard. Communicate to determine pipe owner and eliminate hazard of exposed pipe obstructing water way.**



Look September 13th 2019 from downstream towards upstream at status of Ellsworth Park Dam removal from North Fork River



Look toward downstream from pedestrian bridge in Ellsworth Park at status of dam removal from North Fork River November 26th 2019



Look toward downstream January 23rd 2020 from pedestrian bridge in Ellsworth Park at status of North Fork River Dam removal



217-213-2022
josephgleisner@att.net

**RE: JANUARY 23, 2020 PHOTOGRAPHIC OBSERVATIONS OF
GRAPE CREEK UPSTREAM OF TILTON FOR MONITORING OF
SMALL MUNICIPAL SEPARATE STORM SEWER (MS4),
VILLAGE OF TILTON, ILLINOIS**



**Look January 23rd 2019 at downstream side of culvert under Norfolk
Southern Railroad along Grape Creek**



Look January 23rd 2020 at upstream side of west culvert under Norfolk Southern Railroad along Grape Creek



Look January 23rd 2020 at culverts under Norfolk Southern Railroad upstream side



Look January 23rd 2019 at downstream side of steel culvert at farm field crossing upstream of West Ross Lane along Grape Creek



Look January 23rd 2020 at upstream side of steel culvert along Grape Creek south of West Ross Lane upstream of Tilton



Look January 23rd 2020 at CSX railroad arched concrete culvert upstream side



Look southwesterly at arch concrete bridge structure at CSX railroad over branch of Grape Creek. Notice storm sewer discharging from bank. Water is bleeding from behind abutment. Photo taken January 23rd 2020



Look January 23rd 2020 towards discharge under auto salvage yard toward Grape Creek



Look January 23rd 2020 toward downstream at two 24 inch diameter HDPE culvert under automotive salvage yard



Look January 23rd 2020 toward downstream at culverts under abandoned railroad grade between WITY radio tower and auto salvage yard



Look toward downstream at 5 culverts near WITY radio tower January 23rd 2020



**Look toward east at 3 corrugated metal culvert pipes under access path
January 23rd 2019 upstream of WITY radio tower**

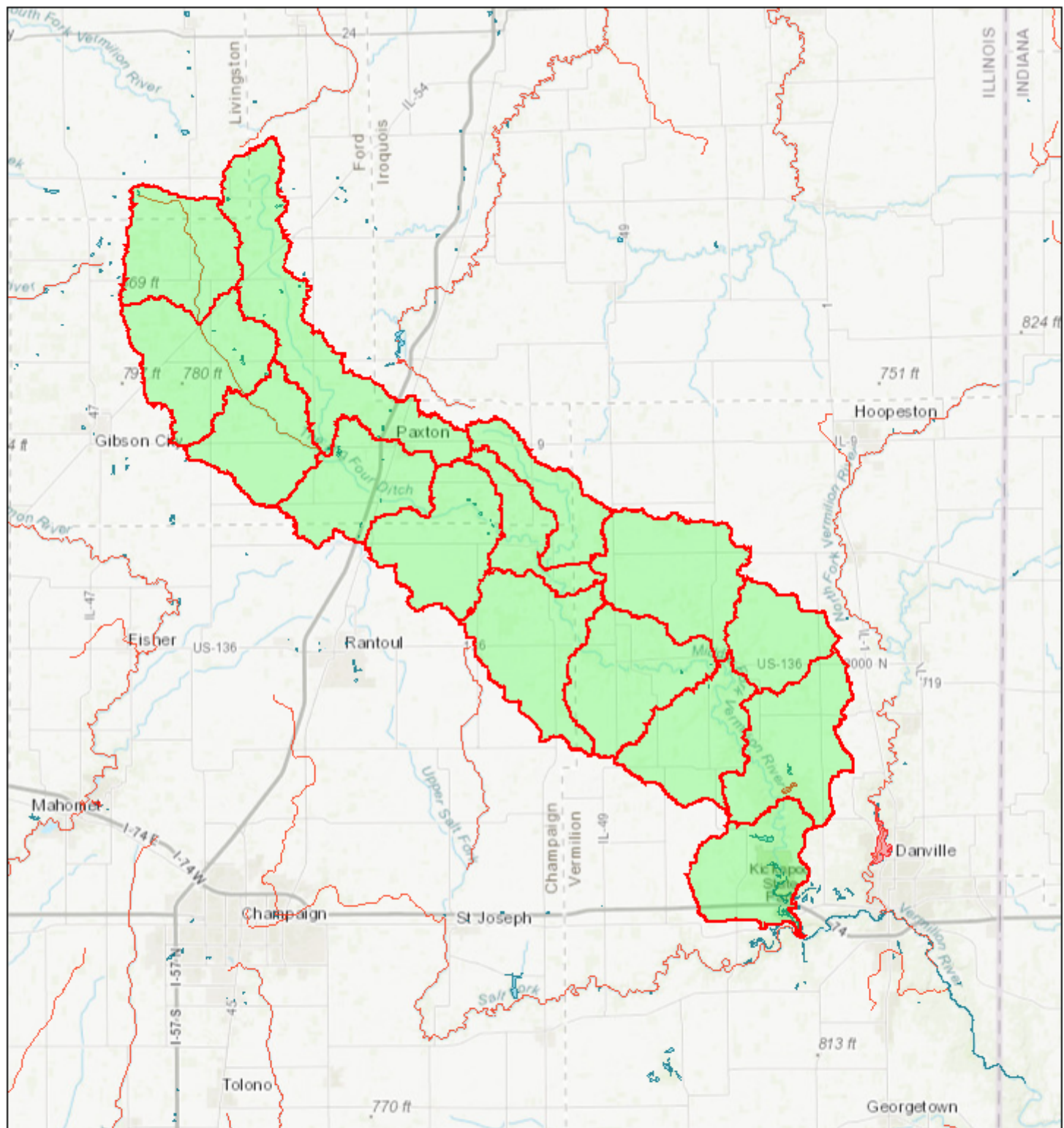


**Look toward upstream at 18 inch storm sewer structure discharging into
ditch north of West 5th Street January 23rd 2019. **Remove & eliminate litter.****



Look January 23rd 2020 towards the east at culvert discharging upstream of Tilton under Route 1 approximately 500 feet north of Spelter Avenue. Communicate with Illinois Department of Transportation to regularly police area and remove also dispose of litter and determine the source of litter and contain. Test quality of water discharging.

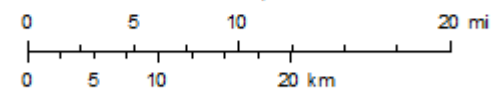
MIDDLE FORK VERMILION RIVER WATERSHED TOWARD TILTON, IL



June 7, 2018

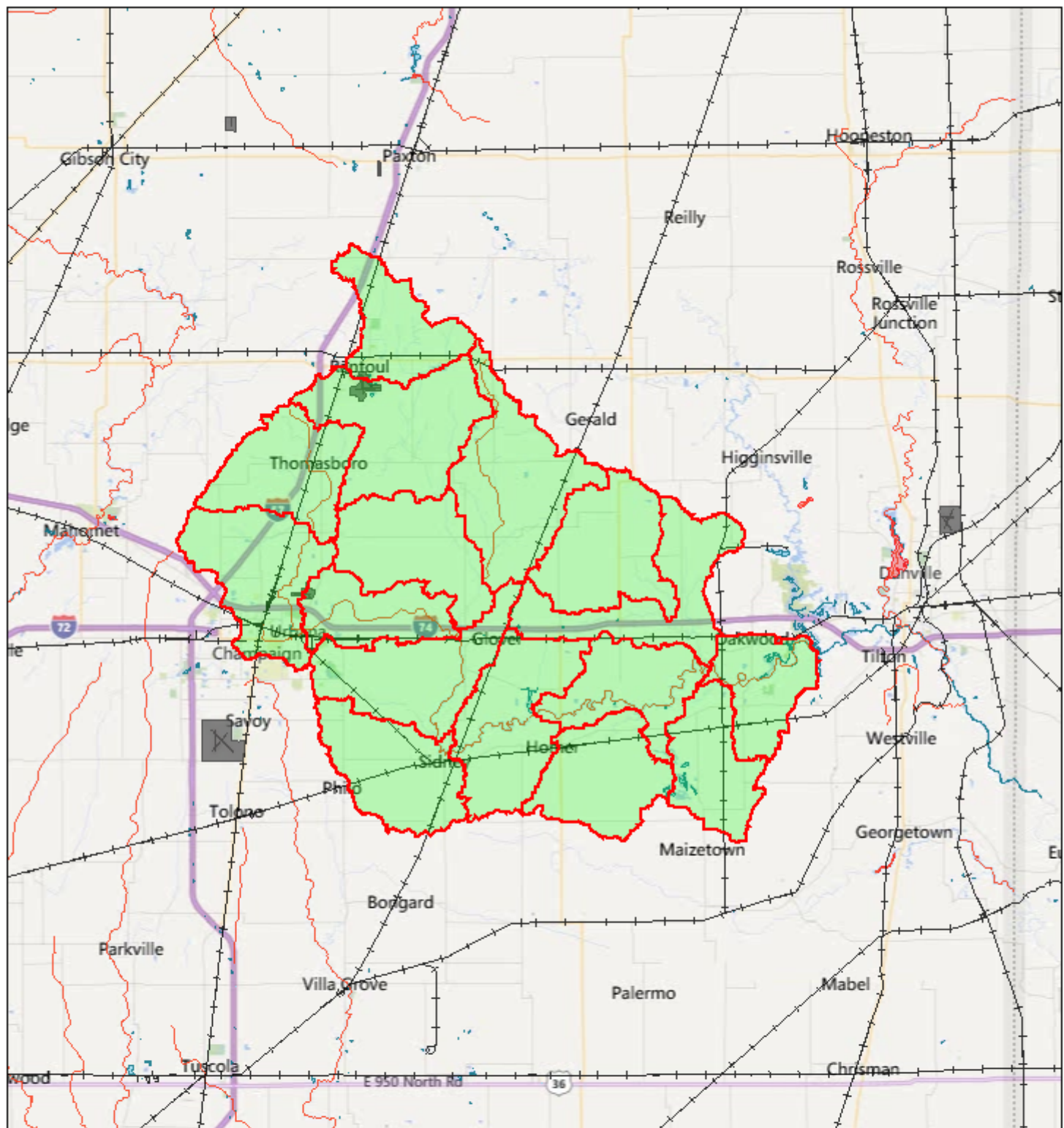
1:577,791

- | | | |
|--|---|--|
| Project 15 | Project 9 | Project 3 |
| Project 14 | Project 8 | Project 2 |
| Project 13 | Project 7 | Project 1 |
| Project 12 | Project 6 | |
| Project 11 | Project 5 | Water Bodies |
| Project 10 | Project 4 | |



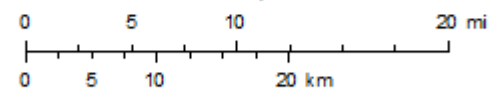
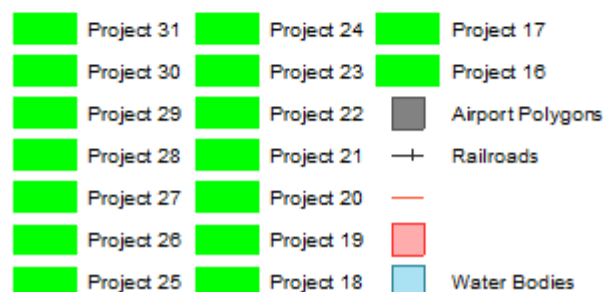
Sources: Esri, HERE, Garmin, Intermap, increment P Corp., GEBCO, USGS, FAO, NPS, NRCAN, GeoBase, IGN, Kadaster NL, Ordnance Survey, Esri Japan, METI, Esri China (Hong Kong), swisstopo, © OpenStreetMap contributors, and the GIS User Community

SALT FORK RIVER WATERSHED TOWARD TILTON, IL



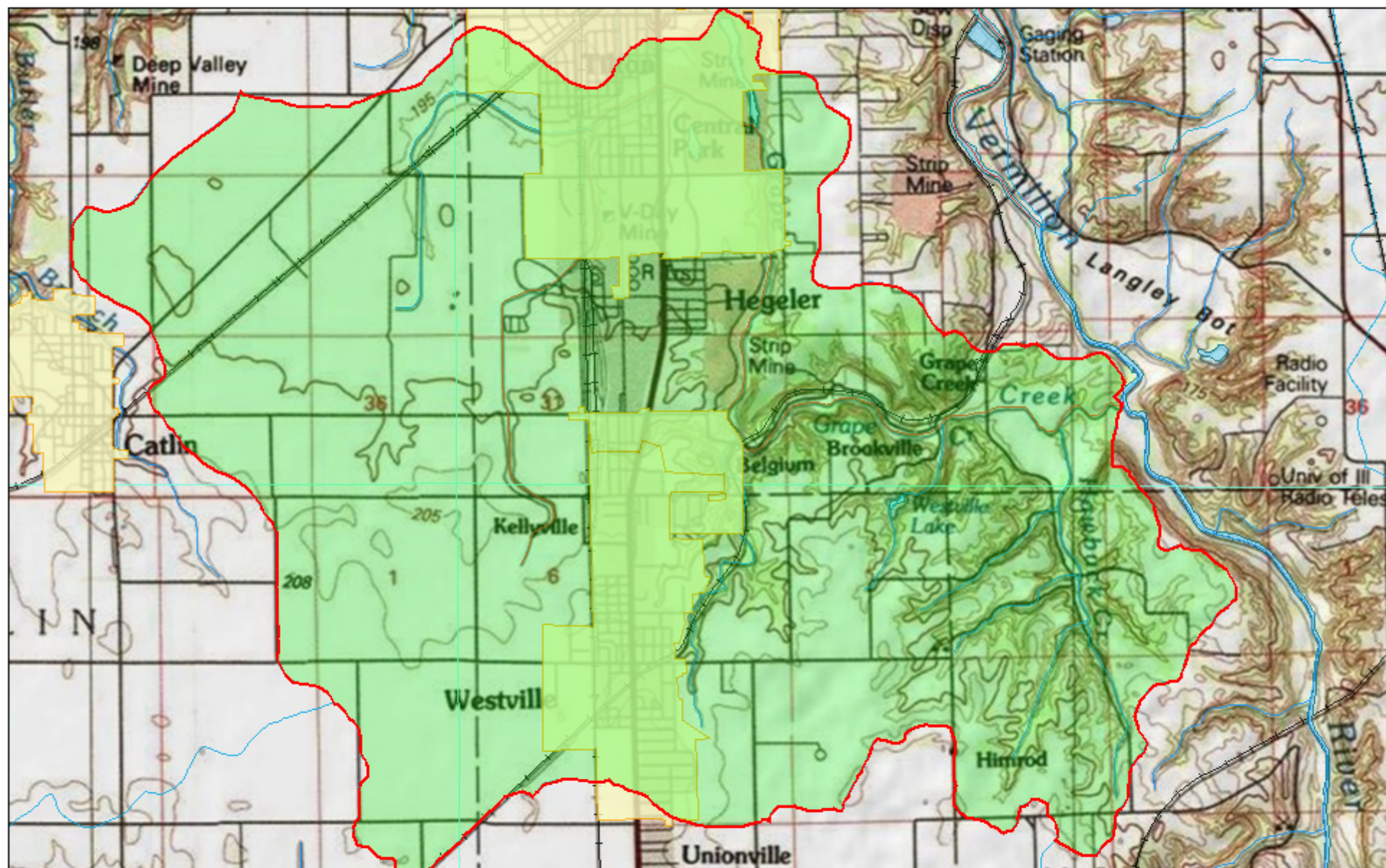
June 7, 2018

1:577,791



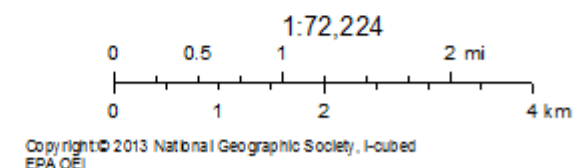
© 2018 Microsoft Corporation © 2018 HERE
EPA OEI

MAP OF GRAPE CREEK WATERSHED



October 26, 2018

- | | | |
|--|---|---|
| Project 1 | | Watersheds (HUC12) |
| City Boundary | Streams | + Railroads |
| Townships Boundary | Water Bodies | |





ILLINOIS ENVIRONMENTAL PROTECTION AGENCY

1021 NORTH GRAND AVENUE EAST, P.O. BOX 19276, SPRINGFIELD, ILLINOIS 62794-9276 • (217) 782-3397

JB PRITZKER, GOVERNOR

JOHN J. KIM, ACTING DIRECTOR

MAY 15 2019

Mr. David Phillips, Mayor
Village of Tilton
1001 Tilton Road
Tilton, IL 61833

Re: Village of Tilton MS4
Small Municipal Separate Storm Sewer System (MS4) Audit
NPDES Permit Number: ILR400664 and Bureau of Water Site ID: W1830900001

Dear Mr. Phillips:

On March 4, 2019 Holly Hirschert representing the Champaign Regional Office visited the Village of Tilton to perform an audit of the Village's stormwater management plan and assess compliance with the General Storm Water Permit for Small Municipal Separate Storm Sewer Systems.

Based on the audit, it appears that the Village of Tilton MS4 has a viable storm water management program, but there are some weaknesses that should be addressed. We offer the following recommendations:

1. Consider updating Chapter 13.25 "Erosion, Sediment Control and Storm Sewer" of the Village of Tilton Code of Ordinances. Sections should be added to address:
 - a. post-construction maintenance of BMPs by developers or homeowners' associations, and
 - b. green infrastructure
2. The reissued permit included a new paragraph on Environmental Justice as defined on page 14 of the permit.

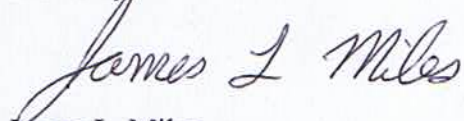
On March 4, 2019 I attended the public meeting at 2 PM at the Village Hall. There was no one else present for Mr. Gleisner's presentation. Citizens of the Village of Tilton may have been unable to participate because of daytime work responsibilities or lack of transportation. The location and time of day should be carefully considered when scheduling public meetings related to compliance with the MS4 permit.

3. Develop a system to track illicit discharges and sanitary sewer overflows.
4. Expand the format of the annual report to include detailed descriptions of community activities that improve storm water quality in the Village of Tilton.
5. Include a list of private construction projects that are inspected by the Village in the annual reports.

A copy of the audit report is enclosed for your information.

Should any questions arise pertaining to this letter, please contact Ms. Hirschert at (217) 278-5800.

Sincerely,



James L. Miles

Acting Manager, Field Operation Section

Bureau of Water

Division of Water Pollution Control

JLM/HNH

cc: BOW/DWPC/RU #15
BOW/DWPC/FOS-Champaign



United States Environmental Protection Agency
Washington, D.C. 20460

Water Compliance Inspection Report

Section A: National Data System Coding (i.e., PCS)

Transaction Code	NPDES	yr/mo/day	Inspection Type	Inspector	Fac Type
1 N 2 3 I L R 4 0 0 6 6 4 11	12 1 9 0 3 0 4 17	18 >	19 S	20 *	
Remarks					
21					
66					
Inspection Work Days	Facility Self-Monitoring Evaluation Rating	BI	QA	Reserved	
67 5 69	70 3	71 -	72 -	73 74 	75 80

Section B: Facility Data

Name and Location of Facility Inspected (For industrial Users discharging to POTW, also include POTW name and NPDES number)	Entry Time/Date	Permit Effective Date
Village of Tilton MS4 1001 Tilton Road Tilton, IL 61833	1:55 PM 03/04/2019	March 1, 2016
BOW Site ID: W1830900001	Exit Time/Date	Permit Expiration Date
	3:35 PM 03/04/2019	02/28/2021**
Name(s) of On-Site Representative(s)/Title(s)/ Phone and Fax Number(s)	Other Facility Data (e.g. SIC NAICS, and other descriptive information)	
Joseph Gleisner, Consulting Engineer Gleisner Engineering 217-213-2022	* MS4 **General Permit	
Name, Address of Responsible Official/Title/Phone and Fax Number	Contacted	
David Phillips, Mayor Village of Tilton 1001 Tilton Road Tilton, IL 61833 phone: 217/477-0800	<input checked="" type="checkbox"/> Yes <input type="checkbox"/> No	

Section C: Areas Evaluated During Inspection (Check only those areas evaluated)

<input checked="" type="checkbox"/> Permit	<input type="checkbox"/> Self-Monitoring Program	<input type="checkbox"/> Pretreatment	<input checked="" type="checkbox"/> MS4
<input checked="" type="checkbox"/> Records/Reports	<input type="checkbox"/> Compliance Schedules	<input type="checkbox"/> Pollution Prevention	
<input type="checkbox"/> Facility Site Review	<input type="checkbox"/> Laboratory	<input checked="" type="checkbox"/> Storm Water	
<input type="checkbox"/> Effluent/Receiving Waters	<input type="checkbox"/> Operation & Maintenance	<input type="checkbox"/> Combined Sewer Overflow	
<input type="checkbox"/> Flow Measurement	<input type="checkbox"/> Sludge Handling/Disposal	<input type="checkbox"/> Sanitary Sewer Overflow	

Section D: Summary of Findings/Comments

(Attach additional sheets of narrative and checklists, including Single Event Violation codes, as necessary)

SEV Codes	SEV Description																									
<table border="1"><tr><td></td><td></td><td></td><td></td><td></td></tr><tr><td></td><td></td><td></td><td></td><td></td></tr><tr><td></td><td></td><td></td><td></td><td></td></tr><tr><td></td><td></td><td></td><td></td><td></td></tr><tr><td></td><td></td><td></td><td></td><td></td></tr></table>																										

Name(s) and Signature(s) of Inspector(s)	Agency/Office/Phone and Fax Numbers	Date
Holly Hirschert Holly Hirschert	217/278-5806	05/06/2019
Signature of Management QA Reviewer	Agency/Office/Phone and Fax Numbers	Date
James L. Miles James L. Miles	217-782-1654	5/14/2019

MS4 AUDIT NOTES

MS4 Name: Village of Tilton

NPDES Permit Number: ILR400664

Bureau of Water Site ID: W1830900001

Date of Meeting: March 4, 2019

Inspection Type: Small Municipal Separate Storm Sewer System (MS4) Audit

Inspected By: Holly Hirschert

EPE III, DWPC/FOS-Champaign

Interviewed: David Phillips, Mayor via phone and email

Joseph Gleisner, Consulting Engineer

GENERAL INFORMATION

Responsible Official and Mailing Address:

David Phillips, Mayor

Village of Tilton

1001 Tilton Road

Tilton, IL 61833

MS4 Location

The Village of Tilton MS4 includes all areas within the boundaries of the Village of Tilton.

NPDES Permit Information

The Village of Tilton submitted its first notice of intent (NOI) in 2005. The second NOI was submitted on August 12, 2012.

In anticipation of the expiration of the general permit at the end of March 2014, Tilton submitted an updated NOI that is dated July 12, 2013. When the permit ILR40 permit was renewed in March 2016, the requirement in Attachment H to submit a new NOI was waived. This audit is based on the goals and milestones from the 2013 document.

Receiving Waters:

Stormwater discharges from the Village of Tilton MS4 flow into Grape Creek tributary to the Vermilion River and the Vermilion River which is tributary to the Wabash River. The Vermilion River in Tilton is listed as impaired for polychlorinated biphenyls (PDBs), mercury, and fecal coliform bacteria.

General Information:

According to the 2010 census, the population of the Village of Tilton was 2,800. A 2018 estimate increased the number to 3,300.

Partnership Agreements:

The Village of Tilton does not have any formal partnership agreements with other MS4s.

STORM WATER MANAGEMENT PROGRAM

The Village of Tilton's stormwater management plan is available in electronic format. Mapping of the storm sewers is an ongoing process.

The permittee has chosen to focus on several BMPs (Best Management Practices) within the six minimum control measures.

A. Public Education and Outreach

1. Distributed Paper Material in the form of USEPA brochures
5. Classroom Education Material
6. Other Public Education

The Village of Tilton has a Storm Water Management page on the tiltonil.com website. In past five years, new links were added to the website for Best Management Practices, Climate Change, Environmental Justice, and Total Maximum Daily Load (TMDL).

In 2017 the list of topics on the website was updated to include:

- What you can do as a Tilton resident
- How to report illegal dumping
- Rain barrels
- Rain gardens
- Water Efficient Landscaping; Pollution Prevention and Using Resources Wisely
- Leak proof waste containers
- Clean Water: 10 Things You Can Do to Prevent Storm Water Runoff Pollution

A supply of educational brochures is also maintained at the Village Hall.

Also in 2017, the consulting engineer reached out to the Danville School District offering education materials about storm water pollution prevention. The Assistant Superintendent for Elementary Education replied saying, "Please know that we have thoroughly reviewed our elementary curriculum and you can rest assure that the topics provided in your materials are covered in our schools."

Other public education was added as a BMP in 2016. The proposed activity was,

Conduct public meeting/training for Village Staff, contractors, trustees, school officials and public regarding Village MS4 Best Management Practices, discharge outfall monitoring, Environmental Justice and Village Erosion Control and Storm Water Ordinances.

There is nothing in the annual reports to indicate how many people participated in the public meetings or training sessions. Records of these activities should be maintained and the numbers included in the annual reports.

B. Public Participation/Involvement

2. Educational Volunteer
7. Other Public Involvement

Each year, the Village sponsors a cleanup day. Disposal of the materials collected is paid for by the Village. The last cleanup occurred on June 2, 2018. Volunteers filled six 30-yard³ dumpsters with discarded materials.

In the 2017-2018 annual report it says, "Engineer performed a screen iteration using mapping tools on EPA Environmental Justice website, generated report then shared information with Village at council meeting of Trustees."

The Environmental Justice map was included as the page of the annual report, but there was no further indication of actions taken to address environmental justice issues.

C. Illicit Discharge Detection and Elimination

1. Storm Sewer Map Preparation
3. Detection and Elimination Prioritization Plan
7. Visual Dry Weather Screening
10. Other Illicit Discharge Controls

Although not mentioned in this section of the annual reports, it should be noted that Chapter 13.12 of the Village Code is entitled "Erosion, Sediment Control, and Storm Sewers." Section 13.16.100 is called "Prohibition of Illicit Connections."

1. Storm Sewer Map Preparation

In 2012-2013 the Village gathered available storm sewer locations and site information to create a digital storm sewer map. A hard copy of map was posted at Public Works Facility. Over the past five years the following updates were made to the map.

- Sewer pipe measurements
- Numbering of sanitary and storm sewer manholes and drainage outfall structures
- Locations of village owned wash-down facilities and private truck/car wash facilities
- Added drainage facilities within the village and immediately upstream.
- Charted and plotted discharge testing locations and analytical data.
- Plotted sanitary sewer flow metering data.

3. Detection and Elimination Prioritization Plan

The village began discussions with local agencies to determine the feasibility of inspecting solid waste transportation equipment operating within the village to identify potential sources of storm water pollution.

4. Illicit Discharge Tracing Procedures-This BMP was added for one year only, 2015-2016. In 2015, flow meters were placed in sanitary sewer lift stations for monitoring during wet and dry periods. This information was added to the digital map. The intent was to identify areas where storm water might be infiltrating the sanitary sewer system that could cause sanitary sewer overflows.

7. Visual Dry Weather Screening

In 2013-2014 The consulting engineer inspected all of the village's storm sewer outlets along Grape Creek. The following year outlets along the Vermilion River were added to this activity. In 2016 and 2017 observations of bridges and culverts crossing Grape Creek were included.

8. Pollutant Field Testing

(This BMP was added for the 2016-17 reporting period.)

2016-2017, storm water discharges to the Vermilion River were sampled upstream and downstream of Tilton. The samples were analyzed for mercury, polychlorinated biphenyls, and fecal coliform bacteria.

In 2017-2018, the Village sampled storm water discharges to Grape Creek and tested for chloride, oil & grease, total suspended solids, nitrates, phosphates and fecal coliform. A former smelting facility is located upstream of Tilton. Sediment samples were collected from Grape Creek downstream of that location and analyzed for lead, arsenic and zinc.

10. Other Illicit Discharge Controls

Using the digital storm sewer map, development began on plans to detain and treat runoff from fire protection and spill cleanup activities. During the 2017-2018 reporting period, the consulting engineer attended training on digital area databases and contour mapping. Then, he reviewed terrain in the village and surrounding areas regarding water retention capabilities.

D. Construction Site Runoff Control

2. Erosion and Sediment Control BMPs

The BMP description is "Emphasize Erosion and Sediment Control requirements in the pre-construction meeting for the Village's construction projects.

The goal is "Continue to emphasize Erosion and Sediment Control requirements in the pre-construction meeting for the Village's construction projects."

In the annual reports up to 2015-2016, the reported activity is "Implement Village Erosion and Sediment Control Ordinances into construction projects."

In the 2016-2017 report, D.7 Other Construction Site Runoff Controls, was added to the BMP list. The activity indicated was "Reviewed Village Erosion, Sediment Control and Storm Water Ordinance regarding permit requirements."

The Code of Ordinances includes an Erosion and Sediment Control Inspection Checklist. The annual reports list the projects that were paid for by the Village of Tilton, but no information is provided about project inspections or reviews.

E. Post-Construction Runoff Control

4. Pre-construction review of BMP Designs

6. Post-construction Inspections

For E.4 Pre-construction Review of BMP designs, the activity is "Review site grading/drainage plans for any new subdivisions/others to be constructed within Tilton MS4 that submit application for Storm Sewer Connection Permit to the Village." The goal is the same as for BMP D.2 above.

Inspection of erosion and sediment control measures are conducted by Village officials and the consulting engineer at pre- and post-construction stages of the construction projects within the Village. The engineer takes photographs of erosion conditions at site visits.

The goal for BMP E.6 is "Time/resources permitting, the Village will continue to perform post-construction observation of the construction site regarding Storm Water Management BMPs."

The village does not currently have any requirements for post construction maintenance of BMPs by developers or homeowners' associations. This is an area that requires attention.

In 2016, E.7 Other Post-Construction Runoff Controls was added to the list of BMPs and the report says annual training was conducted for Village staff & contractors on low impact design techniques.

F. Pollution Prevention/Good Housekeeping

1. Employee Training Program
2. Inspection and Maintenance Program
3. Municipal Operations Storm Water Control
4. Municipal Operations Waste Disposal
5. Flood Management

The employee training includes:

- Proper snow and ice control operations
- Proper street sweeping
- Sewer video inspections
- Smoking and location of sewers

In 2013, Tilton added a BMP to develop operational plans to separate debris collected during stream, drainage system, and public works cleanups into recyclables, landscape waste, street sweeping fines, and garbage. This would involve identifying locations that dispose or recycle materials in a manner to avoid storm water pollution. The Village planned to invest in street sweeping equipment to allow for improved street debris removal operations. The 2014-2015 report includes a sweeper log that lists the streets and the dates those streets were swept in that reporting period.

In 2014, the consulting engineer inspected Grape Creek for erosion and debris buildup. This led to several projects to control erosion and stabilize the creek banks. The objectives were expanded in 2016. The engineer completed the following:

- Monitored and inspected storm water management facilities by conducting visual inspection
- Photographed condition and documented color, odor, clarity, floating solids, suspended solids, foam, oil sheen or other obvious indicators of storm water pollution at storm sewer outfall structures in the Village
- Prepared photographic inspection report including suggestions and recommendations

In response to the 2016 reissued general permit, a new BMP was added, F.6. Other Municipal Controls. TAs a result, the following efforts began.

Because some areas of Tilton drain to the Vermilion River, the consulting engineer collected grab samples from six storm sewer outfalls immediately upstream and downstream of the village. The samples were analyzed for fecal coliform bacteria, mercury, and polychlorinated biphenyls (PCBs). The concentrations for PCBs were all below the method detection limits and the mercury concentrations were less than 0.0002 µg/L. Two of the fecal coliform results were less than the discharge limit of 400 cfu/100 ml. The other four results were greater than 15,000 cfu/ml. The consulting engineer plans to evaluate possible crossover from sanitary sewers to the storm sewers in these areas.

The consulting engineer sampled storm water discharges from seventeen outfalls along Grape Creek in 2017. He conducted surveys of all outfalls that discharge from village storm sewers and photographed each location.

MONITORING, RECORD KEEPING AND REPORTING

Monitoring:

Satisfactory. As describe on the previous page, the Village and the consulting engineer have devoted considerable effort to monitor water quality in the streams that received storm water runoff.

Although not listed as a goal in the NOI, in March 2016, the consulting engineer worked with the Village of Tilton and Danville Township to collect soil samples along Grape Creek downstream of the former Hegeler Zinc smelting facility. They also collected sediment samples that were analyzed for arsenic and zinc.

Record Keeping:

Mostly satisfactory.

Most of the MS4 activities are executed by the consulting engineer. Those activities are described in very detailed annual reports including photographs and analytical results.

The notice of intent and annual reports are available on the Village of Tilton website at <http://tiltonil.com/storm-water-management/>

Reporting:

The annual reports are a comprehensive record of efforts to identify erosion problems and other sources of pollution that may be leaving the MS4 in storm water. However, those reports lack quantitative information about community activities. Some examples would include how much litter was collected during the annual cleanup and the weight of appliances for that were dropped off for recycling.

The reports should provide the numbers of illicit discharges detected and corrected and the number sanitary sewer overflows that were reported to the Illinois EPA

APPARENT VIOLATIONS

No violations of the permit were identified during this audit.

RECOMMENDATIONS

1. Consider updating Chapter 13.25 "Erosion, Sediment Control and Storm Sewer" of the Village of Tilton Code of Ordinances. Sections should be added to address,
 - a. post-construction maintenance of BMPs by developers or homeowners' associations, and
 - b. green infrastructure
2. The reissued permit included a new paragraph on Environmental Justice as defined on page 14 of the permit.

On March 4, 2019 I attended the public meeting at 2 PM at the Village Hall. There was no one else present for Mr. Gleisner's presentation. Citizens of the

Village of Tilton may have been unable to participate because of daytime work responsibilities or lack of transportation. The location and time of day should be carefully considered when scheduling public meetings related to compliance with the MS4 permit.

3. Develop a system to track illicit discharges and sanitary sewer overflows.
4. Expand the format of the annual report to include detailed descriptions of community activities that improve storm water quality in the Village of Tilton.
5. Include a list of private construction projects that are inspected by the Village in the annual reports.

Holly Hirschert

Holly Hirschert
Champaign Regional Office

1	Point	1	Sanitation Program	1	Sanitation
2	Recycling Program	2	Sanitation Schedule	2	Pollution Prevention
3	Facility Site Review	3	Laboratory	3	Storm Water
4	Officer/Inspector/Inspector	4	Sanitation & Storm Water	4	Combined Sewer Overflow
5	Other Meeting/Program	5	Sanitation & Storm Water	5	Sanitary Sewer Overflow

Signature of Inspector/Inspector	Signature of Village and/or Engineer	Date
<i>Holly Hirschert</i>	<i>[Signature]</i>	05/06/2019
Signature of Village and/or Engineer	Signature of Inspector/Inspector	Date
<i>James L. Mills</i>	<i>[Signature]</i>	5/11/2019



217-213-2022
josephgleisner@att.net

OBSERVATION REPORT 1G

**PROJECT: SOUTHGATE DRIVE DISCHARGE
EROSION STABILIZATION, GRAPE CREEK
STORM SEWER OUTFALL, TILTON, IL**

REPORT UPDATED: September 19, 2019
WEATHER: late summer/ early fall
WORK FORCE: 1 Engineer
REPORTED BY: Joseph J. Gleisner, P.E.

OBSERVATIONS & DISCUSSIONS

1. Gleisner photographed site May 16th, 2018
2. May 16th, 2018 Gleisner visited Todds Autobody at 4 Southgate Drive regarding access to storm sewer discharge into Grape Creek.
3. May 17, 2018 Gleisner calls Todd Cox (217) 213-2100 & obtained verbal permission to access storm sewer discharge through property.
4. Gleisner begins preliminary plans, specifications and estimates. This document is intended for estimating; selecting workforce, equipment and material prior to implementing improvement.
5. Gleisner spoke with David Wilson (815) 644-4448 at Big R Stores 1625 Georgetown Road and obtained permission to temporarily remove fence mesh, mitigate erosion and replace fence.
6. March 4, 2019 Gleisner spoke with Holly Hirschert of the IL EPA; she recommends removal of filter fabric from plan.
7. Gleisner reviews Army Corp Nationwide Permit 3 – Maintenance.
8. April 2, 2019 Gleisner called North Branch of Louisville District Office of Army Corp of Engineers (502) 315-6685. Greg McKay

- recommends submitting plan with Application for Department of Army Permit ENG FORM 4345.
9. April 3 Gleisner uses website to generate National Wetland Inventory Map of site. It appears the storm sewer outfall is near upstream edge of Palustrine System and/or downstream of Riverine System. Map and information included in report.
 10. Coordinates for the site are:
Latitude N 40.095 Longitude W -87.632
 11. April 4, 2019 Gleisner updated Observation Report 1C and prepares Application Form 4345 and e-mails to Tilton Mayor for review and signatures.
 12. April 16, 2019 Army Corp of Engineers receives application.
 13. May 13, 2019 Cody Thayer Biologist with Regulatory Division, North Branch Louisville District U.S. Army Corp of Engineers e-mailed concern about clearing trees over 3" diameter at breast height (DBH) because area is within range of the federally endangered Indiana Bat and threatened Northern Long-eared Bat.
 14. The application being considered according to Nationwide Permit 7 Outfall Structures. Gleisner reviews this document on internet.
 15. May 13, 2019 visited the site to photograph potential tree clearing make measurements, review equipment accessibility and did not find tree cracks, crevices, holes or loose/exfoliating bark for habitat for these bats. Gleisner reviewed web for information about these bats.
 16. May 14, 2019 Gleisner ask Mayor Phillips opinion of equipment required to remove flared end section from muck. Village back hoe suggested.
 17. May 16, 2019; Gleisner requests, receives and reviews web link from Thayer. <https://ecos.fws.gov/ipac/> or U.S. Fish & Wildlife Service Ipac Information for Planning and Consultation. Preliminary screen of this site lists Indiana & Northern Long-eared Bat Mammals, Clubshell & Rabbitsfoot Clams also Eastern Prairie Fringe Orchid & Mead's Milkweed Flowering Plants. Screen of Tilton Corporate limits includes Bald Eagle & Red-headed Woodpecker migratory birds. Gleisner reviews information.
 18. May 17, 2019 Gleisner reviews quantities per Thayer request. Though quantities listed on Engineer's Estimate are calculated to include erosion rut north of discharge. Actual calculations of intermittent stream impacts to existing estimates permanent

- discharge of 38.75 Cubic Yards of Rip Rap, 11.25 of Concrete Slurry Mix (Grout) and 3 Cubic Yards of Washed Stone. Form board is temporary. Gleisner concerned time delays will increase quantities to documented worsening erosion conditions.
19. May 29, 2019 U.S. Army Corp of Engineers (project No. LRL-2019-344-cat) letter indicates the work would be authorized through March 18, 2022 under Terms and General Conditions for Nationwide Permit No. 7, Outfall Structures and Associated Intake Structures; also work must comply with Water Quality Certification Conditions with Illinois EPA.
 20. Gleisner speaks with Darren Gove of IEPA & clarifies State's Ecological Compliance Assessment Tool (EcoCAT) consultation with IDNR regarding impacts to threatened or endangered species.
 21. June 13, 2019 Gleisner uses EcoCAT web tool and receives notification the following protected resources may be in the vicinity of the IDNR project number 1911887: Bigeye Chub, Black Sandshell, Bluebreast Darter, Eastern Sand Darter, River Redhorse, Wavy-Rayed Lampmussel.
 22. Morning of June 18, 2019 Gleisner calls IDNR contact Kyle Burkwald 217-785-5500 and receives e-mailed letter that adverse effects are unlikely and consultation is terminated then consultation is valid for two years. Brad Hayes 217-782-0031 of IDNR called mid-afternoon and spoke about species in Vermilion River and Grape Creek.
 23. Gleisner orders and receives shipment of temporary by-pass fitting from Prinsco.
 24. September 19, 2019 Gleisner updates this Observation Report 1F, copies and attaches Army Corp of Engineers & Illinois Departments documentation for submission to Village at board meeting.
 25. September 19, 2019 Gleisner updates the following:

IMPLEMENTATION OPERATIONS LOGISTICS

- Comply according to Army Corp of Engineers Nationwide Permit 7 requirements.
- Communicate and coordinate with Engineer regarding material, equipment and work force selection.
- Communicate with Big R & Todd's Autobody regarding timing of site access.

- **Implement under guidance and continued observation of Engineer during low flow dry weather conditions.**
- **Locate and delineate existing probable property monuments, mark site and call JULIE.**
- **Size board then haul form, washed stone and excavation equipment to site.**
- **Remove & roll back for re-use sufficient barb wire, clips & mess then top rail of chain link fence for access. Width between vertical poles is approximately 9 foot. Saw second post from south end stubbed for reuse per details.**
- **Clear minimum vegetation for equipment access and dispose of off-site out away from wetland. Leave roots in ground and do not remove tree or limbs 3 inches or greater in diameter.**
- **Install temporary flexible drainage by-pass pipe fitting watertight.**
- **Press form board temporarily watertight into soil and berm with washed river stone at appropriate position out of wetland.**
- **Place rip rap in erosion rut and allow equipment access.**
- **Carefully un-seize concrete flared end section for re-use.**
- **Place and shape rip rap at discharge.**
- **Re-install flared end section and maintain temporary by-pass fitting.**
- **Vibrate pre-mixed slurry concrete / grout with maximum 1/2 inch aggregate mixture into voids in manner that cement does not leak into stream. Supply mixture per Engineer requirements. Wash concrete truck and excavator bucket off-site.**
- **Allow concrete to cure then remove by-pass pipe, form board & debris and dispose of off-site. Also grass seed site and establish vegetation. Monitor discharge.**
- **Village of Tilton, Mr. David Phillips sign, date and submit Compliance Certification form to District Engineer within 30 days of completion of authorized work.**



Photograph Northerly at 36" diameter discharge near Grape Creek behind Big R & Todd's Auto Body May 16st, 2018



Photograph southerly at erosion along fence line between Big R & Todd's Auto Body near 36" storm sewer discharge May 16st, 2018



Look southerly May, 13th 2019 at proposed equipment access to discharge



Look northerly May 13, 2019 at erosion rut proposed for fill with riprap grouted from the top to the bottom may minimize required vegetation clearing to access storm water discharge.



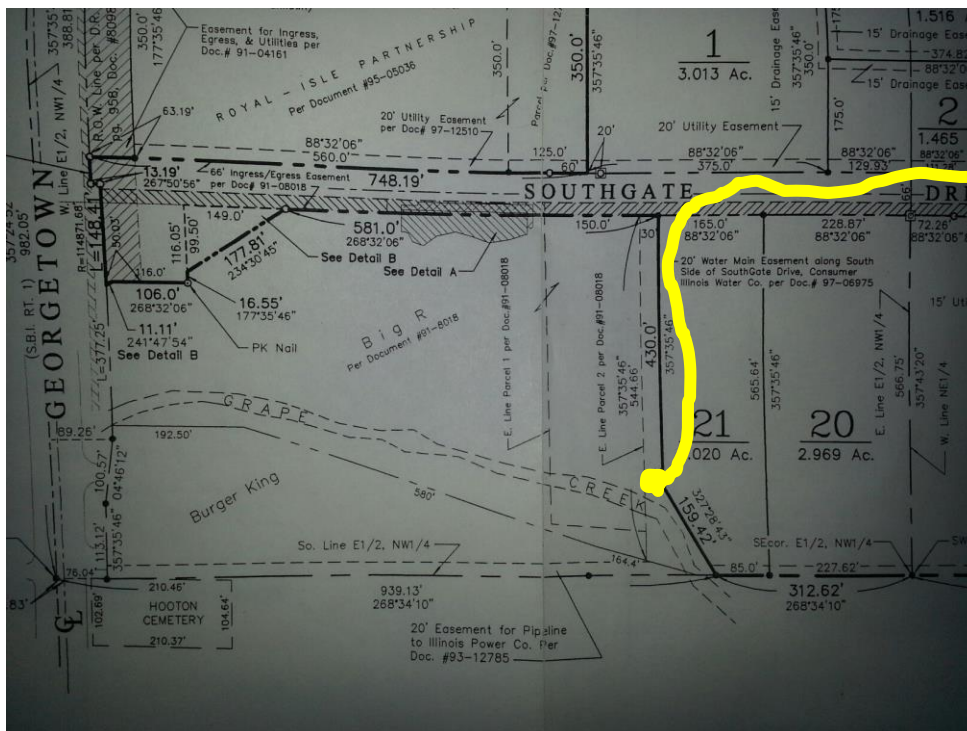
Look towards Northwest at erosion near 36-inch Southgate Drive storm sewer discharge April 10th 2019 from the south side of Grape Creek. Remove tires from stream and coordinate with Army Corp of Engineers requirements according to Nationwide Permit 7.



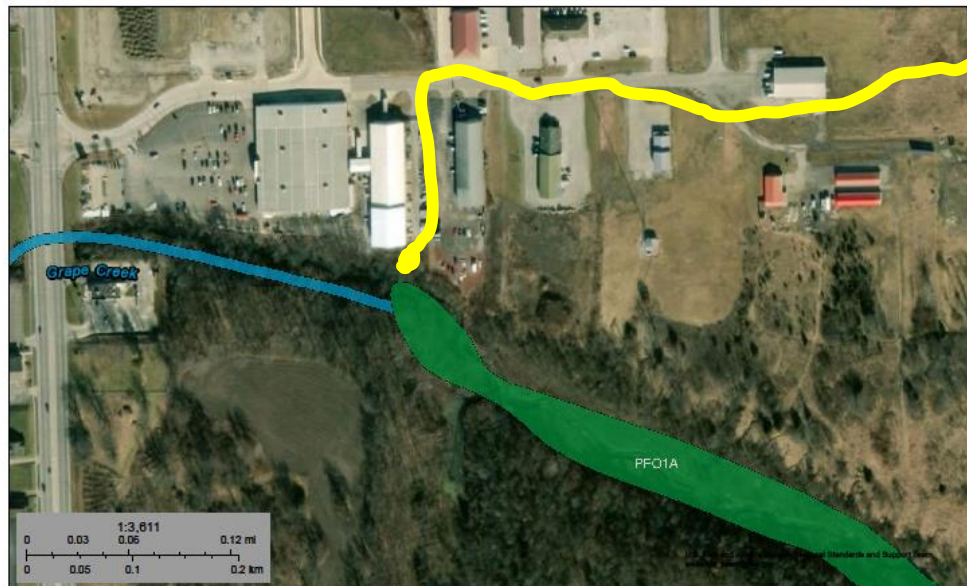
Look April 10th 2019 from the south side of stream towards the north across Grape Creek at erosion near 36 inch diameter storm sewer discharge from Southgate Drive. Coordinate with Army Corp of Engineers requirements according to Nationwide Permit 7.



GIS aerial map of site



Portion of Art Wolfenbarger land survey plat of site



**LOCATION OF
EROSION AT
STORM
SEWER
DISCHARGE**

April 3, 2019

Wetlands	
Estuarine and Marine Deepwater	Freshwater Emergent Wetland
Estuarine and Marine Wetland	Freshwater Forested/Shrub Wetland
	Lake
	Other
	Freshwater Pond
	Riverine

This map is for general reference only. The US Fish and Wildlife Service is not responsible for the accuracy or currentness of the base data shown on this map. All wetlands related data should be used in accordance with the layer metadata found on the Wetlands Mapper web site.

National Wetlands Inventory (NWI)
This page was produced by the NWI mapper

Classification code: PFO1A

System **Palustrine (P)** : The Palustrine System includes all nontidal wetlands dominated by trees, shrubs, persistent emergents, emergent mosses or lichens, and all such wetlands that occur in tidal areas where salinity due to ocean-derived salts is below 0.5 ppt. It also includes wetlands lacking such vegetation, but with all of the following four characteristics: (1) area less than 8 ha (20 acres); (2) active wave-formed or bedrock shoreline features lacking; (3) water depth in the deepest part of basin less than 2.5 m (8.2 ft) at low water; and (4) salinity due to ocean-derived salts less than 0.5 ppt.

Class **Forested (FO)** : Characterized by woody vegetation that is 6 m tall or taller.

Subclass **Broad-Leaved Deciduous (1)** : Woody angiosperms (trees or shrubs) with relatively wide, flat leaves that are shed during the cold or dry season; e.g., black ash (*Fraxinus nigra*).

Water Regime **Temporary Flooded (A)** : Surface water is present for brief periods (from a few days to a few weeks) during the growing season, but the water table usually lies well below the ground surface for the most of the season.

Classification code: R5UBH

System **Riverine (R)** : The Riverine System includes all wetlands and deepwater habitats contained within a channel, with two exceptions: (1) wetlands dominated by trees, shrubs, persistent emergents, emergent mosses, or lichens, and (2) habitats with water containing ocean-derived salts of 0.5 ppt or greater. A channel is an open conduit either naturally or artificially created which periodically or continuously contains moving water, or which forms a connecting link between two bodies of standing water.

Subsystem **Unknown Perennial (5)** : This Subsystem designation was created specifically for use when the distinction between lower perennial, upper perennial, and tidal cannot be made from aerial photography and no data is available.

Class **Unconsolidated Bottom (UB)** : Includes all wetlands and deepwater habitats with at least 25% cover of particles smaller than stones (less than 6-7 cm), and a vegetative cover less than 30%.

Water Regime **Permanently Flooded (H)** : Water covers the substrate throughout the year in all years.

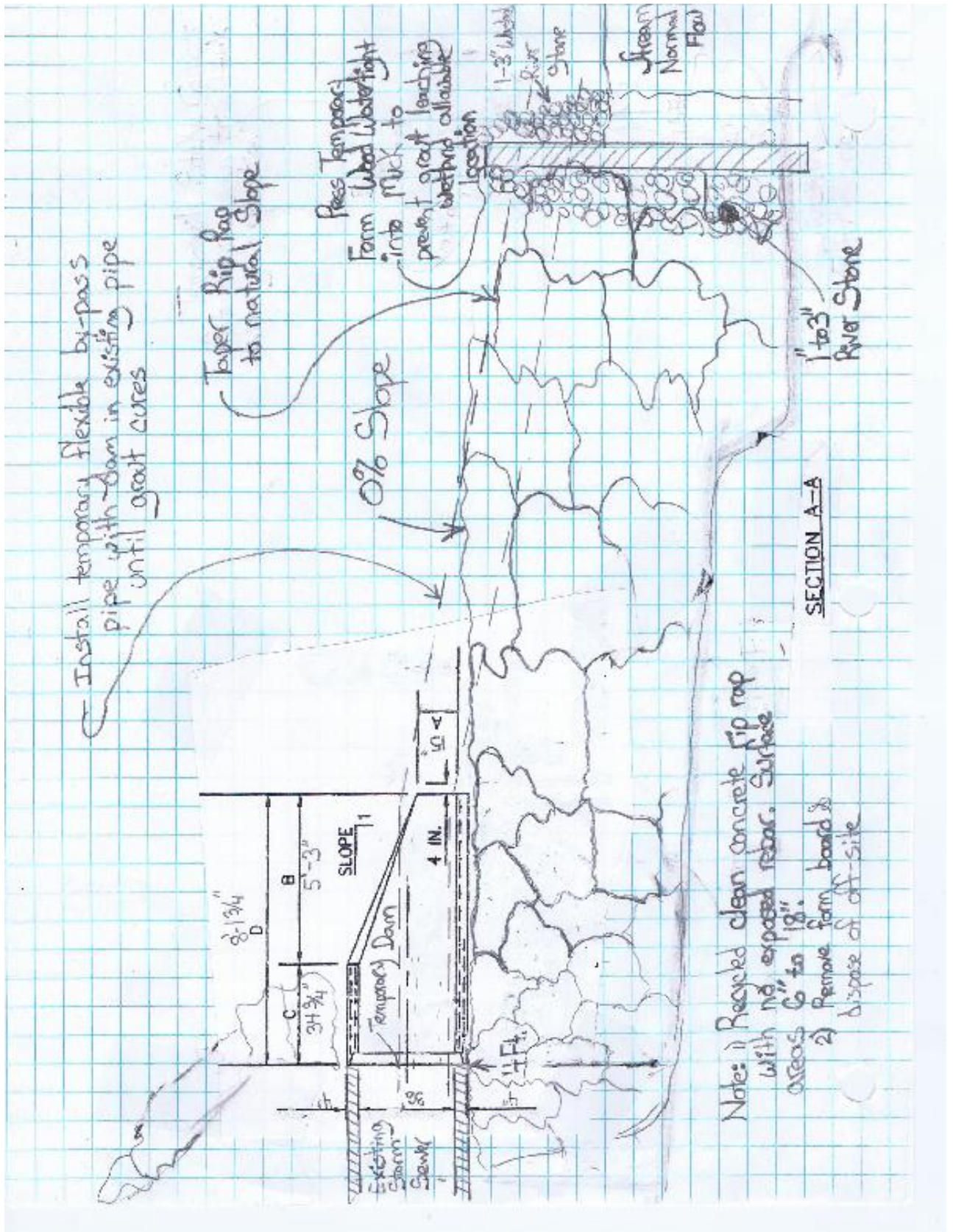
ENGINEERS ESTIMATE OF PROBABLE CONSTRUCTION COSTS

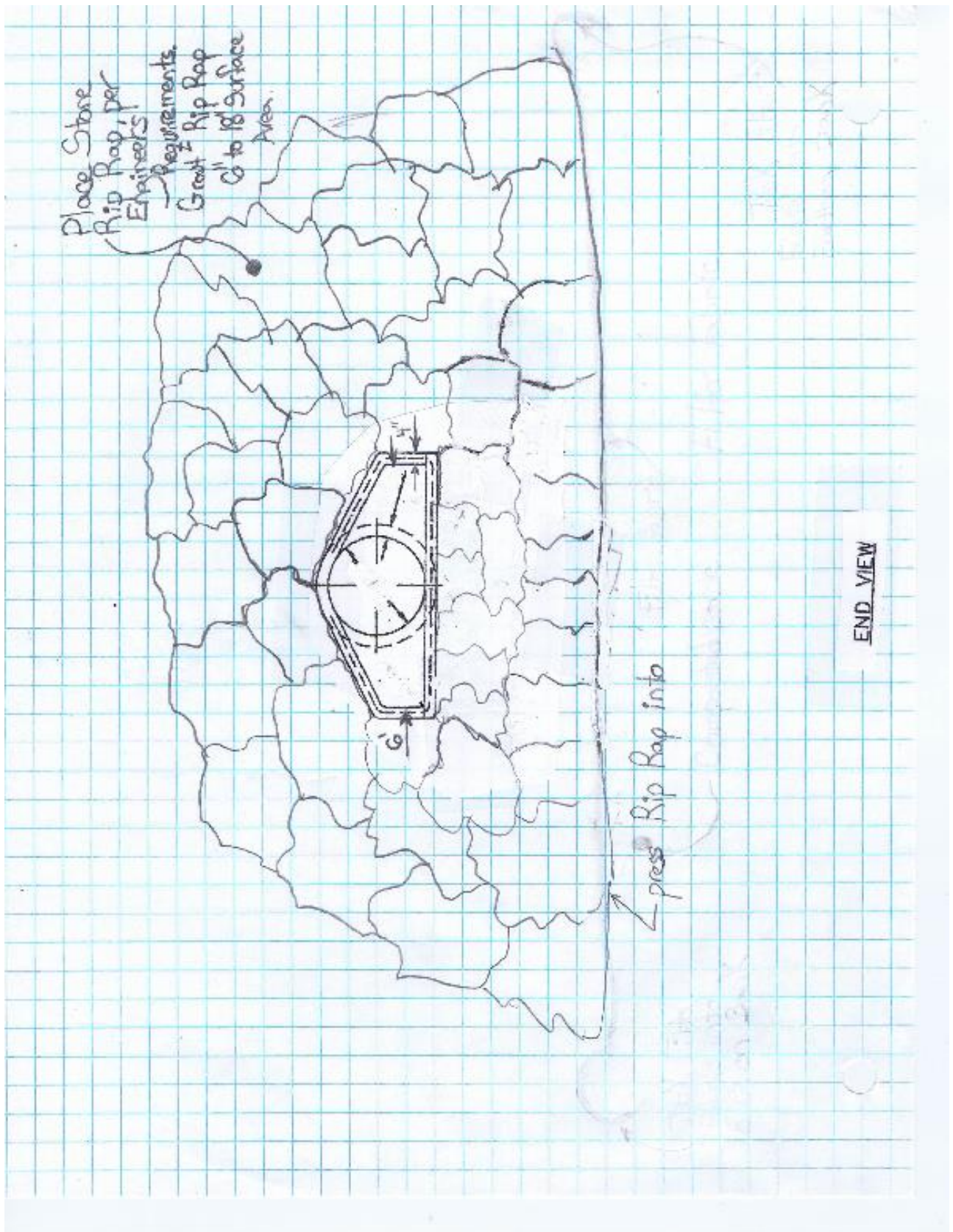
#	ITEM DESCRIPTION	UNITS	ESTIMATED QUANTITY	ESTIMATED UNIT PRICE	EST COS
1	CALL JULIE UNDERGROUND LOCATE	LUMP SUM	1	\$ 100.00	\$
2	SUPPLY ACCESS CONTROL DEVICES & SAFETY	LUMP SUM	1	\$ 300.00	\$
3	TEMPORARILY REMOVE FENCE MESH AND 3 STRAND BARB WIRE. PRESERVE POSTS. ALSO REINSTALL FENCE	FEET	30	\$ 10.00	\$
4	MOBILIZE EQUIPMENT AND PERSONNEL	LUMP SUM	1	\$ 300.00	\$
5	TRIM TREES IN EQUIPMENT ACCESS AREA AT GRADE THEN REMOVE OFF-SITE (less than 3" dia.)	LUMP SUM	1	\$ 350.00	\$
6	UNSEIZE EXISTING FLARED END SECTION KEEP IN A CONDITION FOR REUSE	EACH	1	\$ 325.00	\$
7	INSTALL TEMPORARY STORM SEWER BI-PASS	EACH	1	\$ 400.00	\$
8	SET FORM BOARD WATERTIGHT	LUMP SUM	1	\$ 300.00	\$
9	1 to 3" WASHED RIVER STONE	CUBIC YARDS	3	\$ 200.00	\$
10	REINSTALL REINFORCED CONCRETE FLARED END SECTION	EACH	1	\$ 250.00	\$
11	RIP RAP AT DISCHARGE DISSIPATION	CUBIC YARDS	50	\$ 50.00	\$
12	RIP RAP IN EROSION RUT	CUBIC YARDS	30	\$ 50.00	\$
13	CONCRETE SLURRY MIX DISCHARGE DISSIPATION	CUBIC YARDS	11.25	\$ 200.00	\$
14	CONCRETE SLURRY MIX EROSION RUT	CUBIC YARDS	6.75	\$ 200.00	\$

TOTAL ESTIMATE

\$

SELECT WORKFORCE SHALL NOTIFY ENGINEER 72 HOURS PRIOR TO MOBILIZATION TO SITE







Illinois Department of Natural Resources

One Natural Resources Way Springfield, Illinois 62702-1271
<http://dnr.state.il.us>

JB Pritzker, Governor

Colleen Callahan, Director

June 18, 2019

Joseph J. Gleisner, P.E.
Gleisner Engineering
327 Fletcher Drive
Danville, IL 61832

RE: Southgate Drive Discharge Erosion Stabilization
Project Number(s): 1911887 [ID No. LRL-2019-344.cat]
County: Vermilion

Dear Applicant:

This letter is in reference to the project you recently submitted for consultation. The natural resource review provided by EcoCAT identified protected resources that may be in the vicinity of the proposed action. The Department has evaluated this information and concluded that adverse effects are unlikely. Therefore, consultation under 17 Ill. Adm. Code Part 1075 is terminated.

This consultation is valid for two years unless new information becomes available that was not previously considered; the proposed action is modified; or additional species, essential habitat, or Natural Areas are identified in the vicinity. If the project has not been implemented within two years of the date of this letter, or any of the above listed conditions develop, a new consultation is necessary.

The natural resource review reflects the information existing in the Illinois Natural Heritage Database at the time of the project submittal, and should not be regarded as a final statement on the site being considered, nor should it be a substitute for detailed site surveys or field surveys required for environmental assessments. If additional protected resources are encountered during the project's implementation, you must comply with the applicable statutes and regulations. Also, note that termination does not imply IDNR's authorization or endorsement of the proposed action.

Please contact me if you have questions regarding this review.

Kyle Burkwald
Division of Ecosystems and Environment
217-785-5500



DEPARTMENT OF THE ARMY
U.S. ARMY CORPS OF ENGINEERS, LOUISVILLE DISTRICT
600 DR. MARTIN LUTHER KING JR PL
LOUISVILLE, KY 40202

May 29, 2019

Regulatory Division
North Branch
ID No. LRL-2019-344

Mr. David Phillips
Village of Tilton
1001 Tilton Road
Tilton, Illinois 61833

Dear Mr. Phillips:

This is in regard to a request for authorization submitted on your behalf by Gleisner Engineering (agent) to discharge 99 cubic yards of fill material into 22 linear feet of an unnamed tributary of Grape Creek for the repair and modification of an existing outfall in Vermilion County, Illinois (40.09500, -87.63200). The information supplied by your agent was reviewed to determine whether a Department of the Army (DA) permit will be required under the provisions of Section 404 of the Clean Water Act.

A review of the proposal indicates the work would be authorized under the provisions of 33 CFR 330 B. Nationwide Permit (NWP) No. 7, Outfall Structures and Associated Intake Structures, as published in the Federal Register January 6, 2017. Under the provisions of this authorization you must comply with the enclosed Terms and General Conditions for Nationwide Permit No. 7.

You must also comply with the enclosed Water Quality Certification (WQC) Conditions for Nationwide Permit No. 7, dated March 19, 2017, issued by the Illinois Environmental Protection Agency (ILEPA). Once you obtain your certification, or if no application was required, you may proceed with the project without further contact or verification from us.

This verification is valid until March 18, 2022. The enclosed Compliance Certification must be submitted to the District Engineer within 30 days of completion of the authorized activity or the implementation of any required compensatory mitigation, whichever occurs later. Note that we also perform periodic inspections to ensure compliance with our permit conditions and applicable Federal laws. A copy of this letter is being sent to your agent and to the ILEPA.

If you have any questions, please contact this office by writing to the above address, ATTN: CELRL-RDN, or by contacting me at Cody.a.Thayer@usace.army.mil or 502-315-6690. All correspondence pertaining to this matter should refer to our ID No. LRL-2019-344-cat.

Sincerely,

Cody Thayer
Project Manager, North Branch
Regulatory Division

Enclosures

COORDINATING AGENCY

Mr. Darin LeCrone
Illinois Environmental Protection Agency
Bureau of Water - Watershed Management Section #15
1021 North Grand Avenue East
P.O. Box 19276
Springfield, Illinois 62794-9276

AGENT

Mr. Joseph Gleisner
Gleisner Engineering

Compliance Certification:

Permit Number: LRL-2019-344-cat

Name of Permittee: Village of Tilton: Mr. David Phillips

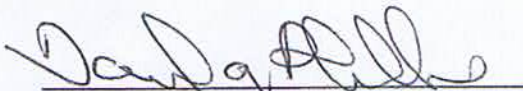
Date of Issuance: May 28, 2019

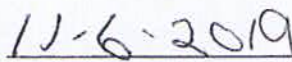
Upon completion of the activity authorized by this permit and any mitigation required by this permit, sign this certification and return it to the following address:

U.S. Army Corps of Engineers
CELRL-RDN
P.O. Box 59
Louisville, Kentucky 40201

Please note that your permitted activity is subject to a compliance inspection by an U.S. Army Corps of Engineers representative. If you fail to comply with this permit you are subject to permit suspension, modification, or revocation.

I hereby certify that the work authorized by the above referenced permit has been completed in accordance with the terms and conditions of the said permit, and required mitigation was completed in accordance with the permit conditions.


Signature of Permittee


Date

GLEISNER ENGINEERING

217-213-2022

josephgleisner@att.net

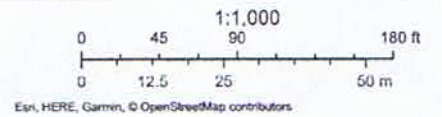
**RE: COMMUNICATION REGARDING DRAINAGE ACCESS NORTH OF
EAST 1st STREET, VILLAGE OF TILTON, VERMILION COUNTY,
ILLINOIS**

In response to letter sent February 19, 2019 and during a phone conversation with Joseph Gleisner; Wade McKelvey 502 North F Tilton, IL 61833 gave verbal permission for the Village to implement and maintenance of drainage way and access improvement.

PLAN VIEW



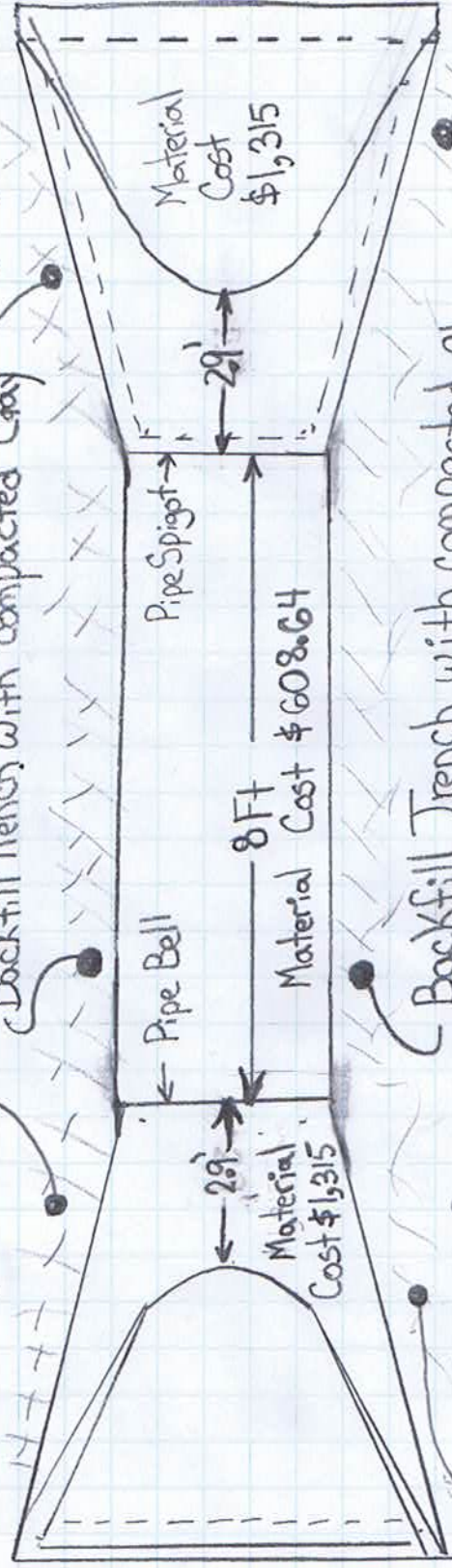
February 18, 2019



GLEISNER ENGINEERING
Copyright 2017 Vermilion County, IL and Bruce Harris and Associates

Grouted Stone
Rip Rap Surface

Backfill Trench with compacted Clay



Material
Cost
\$1,315

Pipe Spigot

Pipe Bell

Material Cost \$608.64

Flow
→

Backfill Trench with compacted Clay

Grouted Stone Rip Rap
Surface

Grouted
Stone Rip Rap
Surface

Equipment Access
Width
14 Ft.

County Materials
Delivery Charge \$200
Contact Austin Evins
317-323-6005

Mix Grout &
2" to 6" Stone Graded
1 Ft thick Surface

Low Elevation of Path
Profile

Filter Fabric

FES
Spigot
5,380 lbs

42" RCP Class III
6,690 lbs

FES
Bell
5,380 lbs

Bed Pipe 2" to 6" Stone

Toe
8.2'

Toe
8.2'

Engineer's Preliminary Opinion of Probable Construction Costs for Installation of Equipment Access Culvert North of East 1st Street & East of F Street, Tilton, Illinois

1)	Call JULIE	\$50
2)	Grade Staking by Engineering	\$200
3)	Value of Village Staff, End Loader & Excavator & Truck to install	\$1,500
4)	Concrete Flared End Section with Bell (42" Dia.)	\$1,315
5)	Concrete Flared End Section with Spigot (42" Dia.)	\$1,315
6)	8 Foot Section Class 3 Concrete Pipe (42" Dia.)	\$610
7)	8 Cubic Yards of 2" to 6" Stone at \$40/cy	\$320
8)	Grout and Sac-Crete	\$300
9)	Soil for grading profile	\$300
10)	Surface restoration	\$200

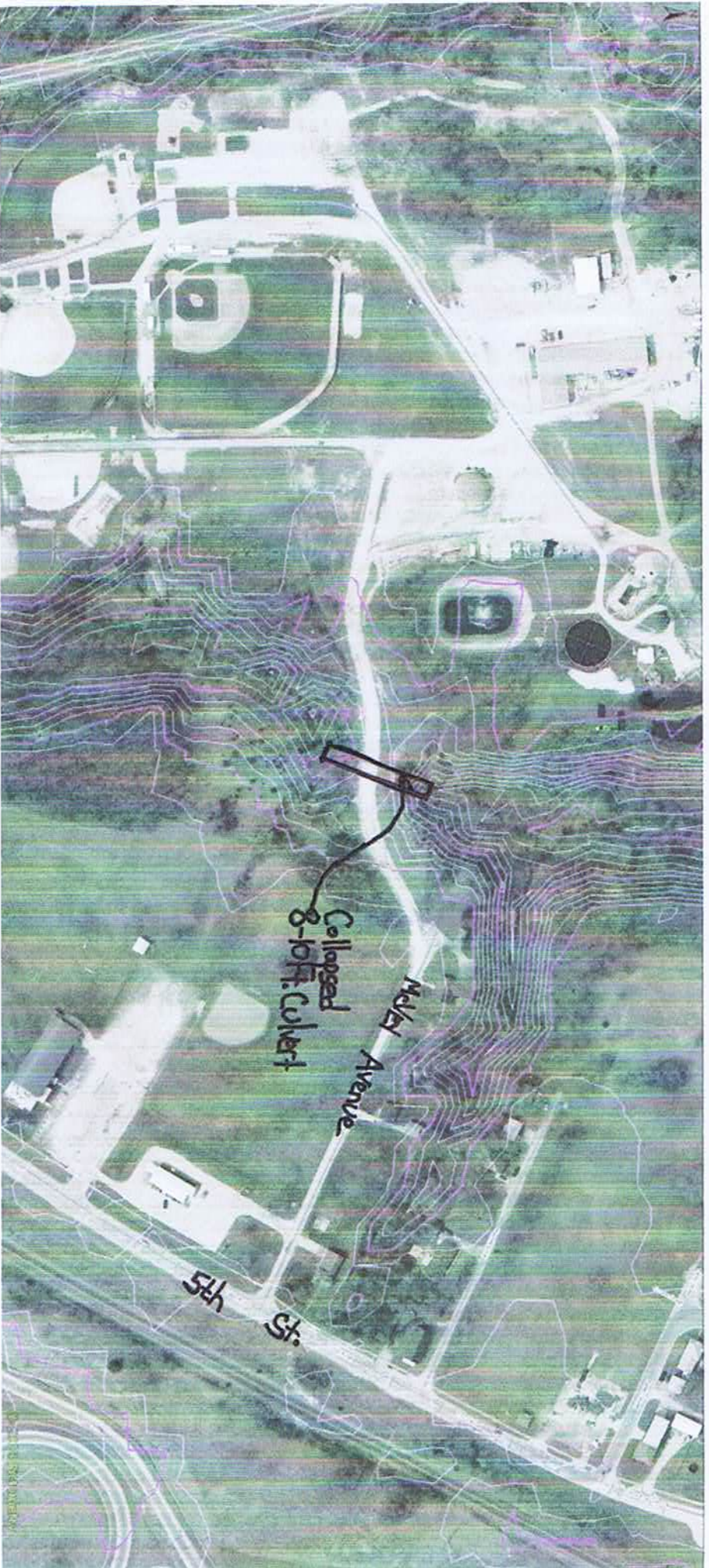
SUB-TOTAL ----- \$ 6,110

10% Contingency ----- \$611

Engineer's Construction Estimate \$ 6,800

* Plus per diem Construction Engineering

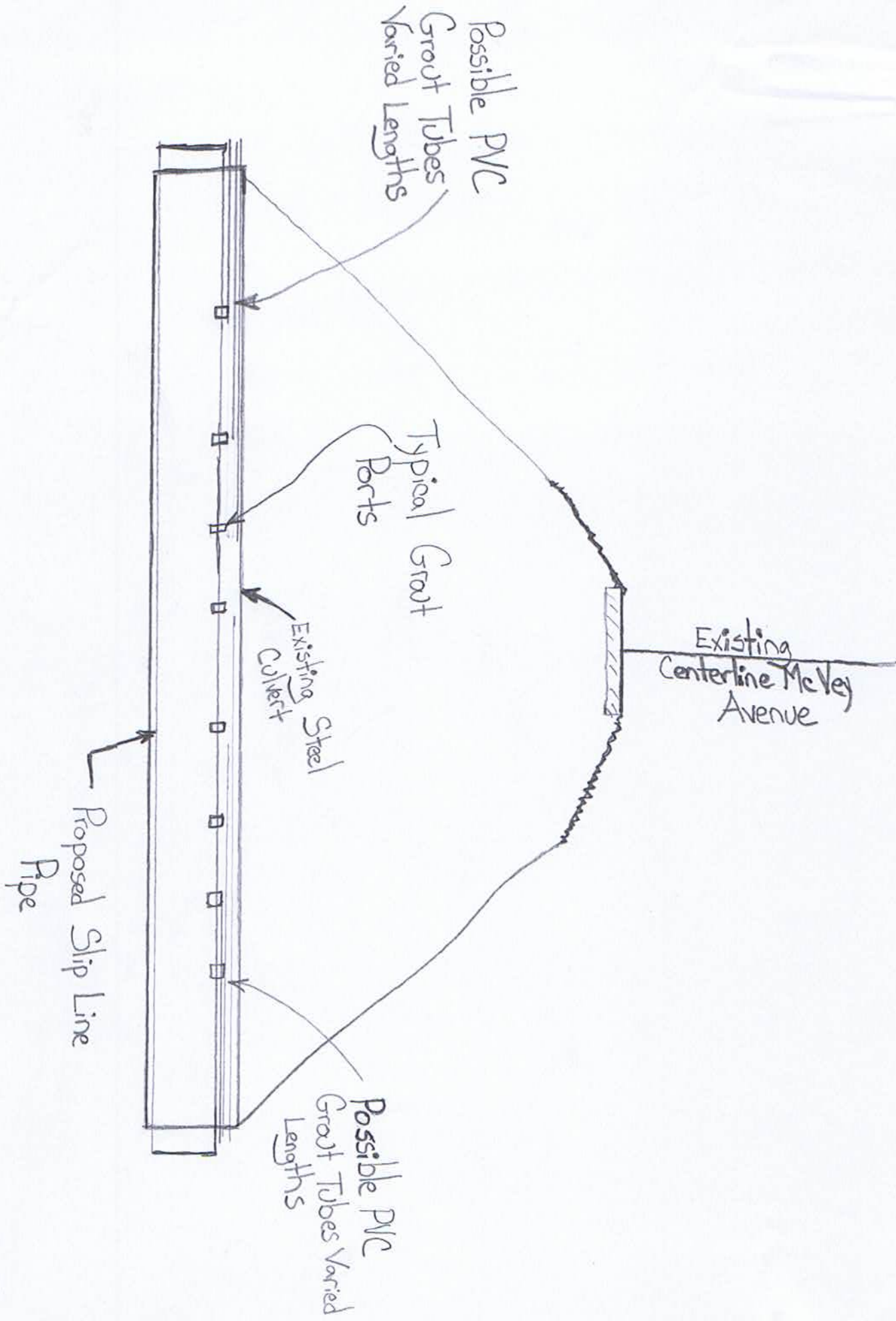
McVey Ave Culvert Mitigation Tilton, IL NPDES MS4

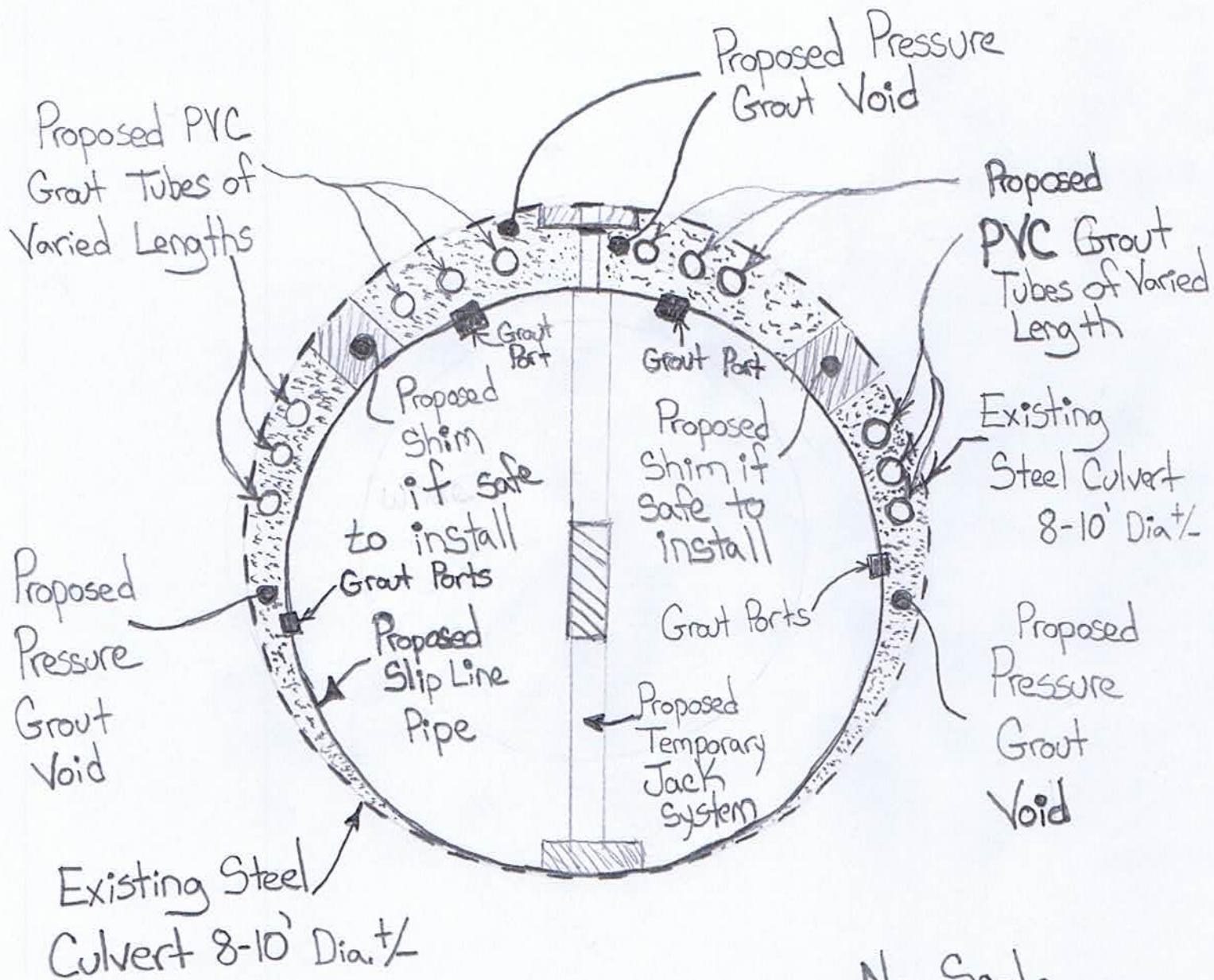


Proposed Preliminary Engineering Plan Order of Operations

- 1) Safely Camera inside of pipe.
- 2) If safe engineer measure culvert.
- 3) Determine feasibility to remove & replace or slip line

03/16/2018





No Scale

AFFP

TILTON 743516

Affidavit of Publication

STATE OF ILLINOIS }
COUNTY OF VERMILION } SS

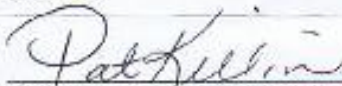
Greg L. Parrotto, being duly sworn, says:

That he is Publisher of the Independent News, a weekly newspaper of general circulation, printed and published in Georgetown, Vermilion County, Illinois; that the publication, a copy of which is attached hereto, was published in the said newspaper on the following dates:

February 12, 2020

That said newspaper was regularly issued and circulated on those dates:

SIGNED:



Authorized Agent, Vermilion County, Illinois

TILTON STORM WATER MANAGEMENT PROGRAM

A public meeting is scheduled for Thursday, February 20, 2020 at 5:00 pm at Village Hall, 1001 Tilton Road, Tilton, Illinois 61833.

Topics:

- Pollution Prevention
- Website
- Inspection Documentation
- Environmental Justice

743516 02/12

TILTON STORM WATER MANAGEMENT PROGRAM

A public meeting is scheduled for Thursday, February 20, 2020 at 5:00 pm at Village Hall, 1001 Tilton Road, Tilton, Illinois 61833.

Topics:

- Pollution Prevention
- Website
- Inspection Documentation
- Environmental Justice

743516 02/12

99226819 00743516

JOE GLEISNER
GLEISNER ENGINEERING

TILTON STORM WATER MANAGEMENT PROGRAM

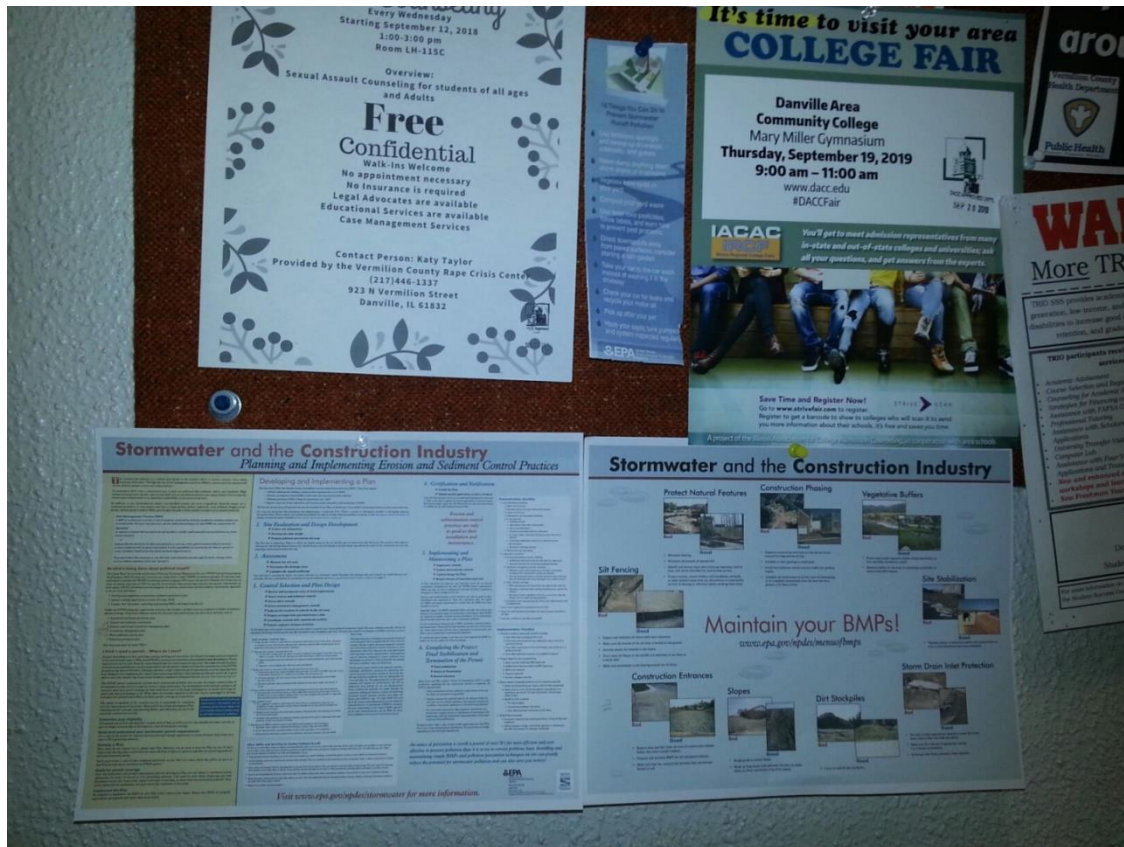
A public meeting is scheduled for Thursday; February 20, 2020 at 5:00 pm at Village Hall, 1001 Tilton Road, Tilton, Illinois 61833.

Topics:

- **Pollution Prevention**
- **Website**
- **Inspection Documentation**
- **Environmental Justice**



217-213-2022
josephgleisner@att.net



Look North September 13th 2019 at stormwater pollution prevention Flyers posted on bulletin board in the clock tower building north entrance at Danville Area Community College

Gleisner Engineering prepared Summary of MS4 General Permit Requirements & Pollution Prevention & Presented at Danville Area Community College for Engineering Day

February 21, 2019 at 8:30 am - 11:00 am.

Summary: Sophomores from local high schools will be broken into small groups and cycled through presentations related to engineering with a "plug" for DACC engineering and the presenter's business. See below for Schedule, room assignments and presentation overviews.

Schedule

7:30 am	Classrooms are available for Setup
8:00 am	Tour Guide Orientation & Breakfast, MM300
8:30 am	Presenter Orientation & Breakfast, MM300
9:00 am	Opening Session, MM181
9:30 - 9:50 am	First Presentation, Students Complete Information Cards
10:00-10:20 am	Second Presentation
10:30-11:50 am	Third Presentation, Students Complete Surveys
11:00 am	Gym for Bus Pickup

Room Assignments

Presentation	Presenter, Company	Location
Opening Speaker	Doug Hunter and Ben Jun, PLTW	181
Presentation 1	Mark Hardwidge, DACC	171
Presentation 2	Ryan Pinter, Danville Metal	173
Presentation 3	Margaret Zillman, Whiting-Turner Contracting	184
→ Presentation 4	Joseph Gleisner, Gleisner Engineering	186
Presentation 5	Alan Thompson, DACC	208
Presentation 6:	Jacob Wright/Dan Smith, Fiberteq	210
Backup:	None—Kathy may be on Jury Duty	

Presentation Overview:

- Presentations are 20 minutes in length. You will have 10-15 students per group and will see three groups of students.
- Please leave 5 minutes at the end of your presentation to highlight DACC Engineering and your industry.
- During your first presentation, we will have you collect basic information from the students. The cards they need to fill out will be in your rooms or passed out in the training session.
- Please make your presentations as activity-oriented or your project-orientated as possible.
- Rooms will be available prior to the event for setup (beginning at 7:30am). Expect to have your rooms ready by 8:30 am. Training session and breakfast will occur at 8:30am in MM300.

Presentation 1 → 6 students 2 guides
 2 → 4 students 1 guide
 3 → 4 students 2 guides
 4 → 4 students 1 guide 1 DACC student

Joseph Gleisner attended these weekly courses at the University of Illinois as part of the outreach efforts then provided verbal summary of lectures at Village of Tilton and City of Danville board meetings. General notes included.

All Connected

A publish.illinois.edu site

All Connected: Human Behavior and the Environment in the Vermilion River System

Posted on **January 16, 2019**

This spring 2019 series of lectures is organized in conjunction with an undergraduate class ([ESE 311], titled "Environmental Issues Today) and open to the public. Lectures will take place from 3:30 – 4:50 p.m. in Room 1306, Everitt Lab, 1406 West Green Street in Urbana.

Links to readings on the topics will be posted as they are available. If any talks need to be cancelled or rescheduled information will be posted here as soon as it is received.

Questions? email to rkanter@illinois.edu

–Rob Kanter

January 24 **Speaker:** Eric Freyfogel, Swanlund Chair and Professor of Law Emeritus

Topic: An ethical framework for exploring issues

"Lecture on law philosophy regarding the Vermilion River Watershed"

January 31 **Speaker:** Jim Angel, climate scientist

Topic: Potential impacts of climate change on the system

"Lecture stated it is getting wetter by 10 to 15%, more humid, winter temperatures lower, more frequent flooding & more information available at <http://nca2018.globalchange.gov/>"

February 7 **Speaker:** Laura Elizabeth Christianson, Department of Crop Sciences

Topic: Water quality and nutrient loss reduction in agriculture

"Lectured on concern of hypoxic zone in Gulf of Mexico. IL due to Nitrogen and Phosphorus"

February 14 **Speaker:** Suzanne Smith, Edgewood Farm

Topic: Production agriculture and environmental stewardship

"Lecture considering using cover crops, asked if field tiles restricted in Winter?"

February 21 **Speaker:** Jeremy Tiemann, Associate Aquatic Ecologist, Illinois
Natural History Survey

Topic: Reintroduction of two federally-endangered mussels in Illinois

"Lecture on putting Northern Riffleshell & Clubshell mussels in Vermilion River"

February 28 **Speaker:** David Bane, Bane Family Meats

Topic: Diversified livestock farming: Healthy, Humane, and
Regenerative

"Lecture on organic farming near the Salt Fork River"

March 28 **Speaker:** Andrew Rehn, Water Resources Engineer, Prairie Rivers
Network; Pam and Lan Richart, Eco-Justice Collaborative (?)

Topic: Coal ash as a threat to Middle Fork of the Vermilion

"Lecture on concern of 3.3 million CY coal ash proposed to be capped. Asked if solar could be place on

April 4 **Speaker:** C. Eliana Brown, Stormwater Specialist, Illinois Extension
ANR/Illinois-Indiana Sea Grant

Topic: Rethinking stormwater management for healthy rivers

"Lecture on ILs 400 MS4s, 42 million acres lawn, green technology & leaves generate N2"

April 11 **Speaker:** Rob Kanter, School of Earth, Society, and Environment

Topic: Wildlife in the system

"Lecture of photos of wildlife in Boneyard Creek on UofI campus and in Vermilion River"

April 18 **Speaker:** Cindy Shepherd, Central Illinois Outreach Director, Faith in
Place

Topic: Environmental activism with a religious foundation

"Lecture on the 33 of 333 faith partners within watershed & environmental efforts"

ILLICIT DISCHARGE TRACKING SHEET

TILTON, IL NPDES MS4

[illegible]

SWEeper LOG SHEET, VILLAGE OF TILTON, ILLINOIS

LOCATION	DRIVER	DATE	HOURS	LANE	SWEEPER	CALCULATED
			SWEETING PAVEMENT SECTION	MILES OF PAVEMENT SECTION	HOPPER LOADS FROM SECTION	DEBRIS IN CUBIC YARD SWEPT
PAGE TOTALS						

SEWER CLEANING LOG

TILTON, IL NPDES MS4

[illegible]

ATTACHMENT H
Annual Facility Inspection Report
MS4 PHASE 2 NPDES Permit No. IL400664
Village of Tilton, Illinois
(Reporting Period March 2019/2020)

PROPOSED 2020/2021 MS4 PHASE 2 NPDES STORM WATER ACTIVITY SUMMARY

BMP #	BMP	Category	Description	Proposed Activity
A	Public education and outreach	A.1	Distributed paper material	Distribute public education material and make available at Village Hall and post on Village Storm Water Management website for interested public.
		A.5	Classroom education materials	Distribute public education and outreach material to interest public & schools.
		A.6	Other Public Education	Conduct public meeting/training for Village Staff, contractors, trustees, school officials and public regarding Village MS4 Best Management Practices, discharge outfall monitoring, Environmental Justice and Village Erosion Control and Storm Water Ordinances. Continue regular communication with public regarding Pollution prevention and clean-ups.
B	Public participation\involvement	B.2	Educational volunteer	Continue to communicate with local and upstream schools to raise awareness on types of green infrastructure and how it benefits in reducing such pollution.
		B.7	Other public involvement	Distribution of EPA flyers and Village intends to post education material and flyers on website. Review Environmental Justice at meetings and continue outreach to adjacent drainage area responsible personnel. Attend public meetings regarding Middle Fork River and coal ash when available and safe.
C	Illicit discharge detection and elimination	C.1	Sewer map preparation Update	Update digital storm and sanitary sewer facilities of Village on Drainage Map including numbering of manholes and drainage outfall structures also wash down facilities. Print hard copy and post at Village Public Works facility. Engineer provide Village maintenance staff update of Sewer Base Map Book for use on Vector & Sewer video inspection truck for purpose of IEPA reporting. Village staff complete sewer and illicit discharge forms. Village document sewer smoking progress on map & record video inspections for filing. Engineer continue to use EJSscreen tool and IL EPA urban list to search for and review MS4 Annual Reports where found on website of upstream communities.
		C.3	Detection/Elimination Prioritization Plan	Continue to further inspect solid waste transportation equipment mobilizing through Village jurisdiction, identify sources of storm water pollution and contain waste. Village smoke and video inspect prioritized sewer areas. Inspect & map solid waste containers in Village and communicate to contain all waste. Review ordinance.
		C.7	Visual dry weather screening	Preform observation/screening/monitoring of storm sewer outlets along Grape Creek and Vermilion River. Include areas within Village also upstream and immediately downstream.
		C.10	Illicit Discharge Controls	Continue review of mapping for potential areas to detain and treat water run-off from major fires. Report to authorities findings of upstream inspections. Review solid waste container ordinance with regard to what is actually in field.

ATTACHMENT H
Annual Facility Inspection Report
MS4 PHASE 2 NPDES Permit No. IL400664
Village of Tilton, Illinois
(Reporting Period March 2019/2020)

PROPOSED 2020/2021 MS4 PHASE 2 NPDES STORM WATER ACTIVITY SUMMARY (continued)

BMP #	BMP	Category	Description	Proposed Activity
D	Construction site runoff control	D.2	Erosion and Sediment Control BMPs	Implement Village Erosion and Sediment Control Ordinances into construction projects. Remove sediment build-up along Grape Creek & dispose of. Prepare permit notices.
		D.7	Other Construction Site Run-off Controls	Review Village Erosion, Sediment Control and Storm Water Ordinance. Consider improvements.
E	Post-Construction runoff control	E.4	Pre-Construction Review of BMP Design	Inspection of erosion and sediment control measures are being conducted by the Village officials and consulting engineers at pre and post-construction stages of the construction projects within the Village.
		E.6	Post-Construction Inspections	Village and consulting engineer perform post-construction visual observation of construction sites regarding Storm Water Management BMPs.
		E.7	Other Post-Construction Run-off Controls	Conduct Annual Training for Village Staff & Contractors on low impact design techniques.
F	Pollution Prevention/ Good Housekeeping	F.1	Employee Training Program	Continue training for Village public works personnel regarding proper street sweeping operations, sewer video inspection & location operations and debris disposal also snow and ice control operations. General equipment operations and maintenance.
		F.2	Inspection and Maintenance Program	<p>Inspect inlet and outlet drainage facilities within Village thence remove debris and address erosion. Continue to sweep streets, manage road maintenance material and document progress. Video inspect sewer piping & perform sewer smoking.</p> <p><u>List of maintenance:</u></p> <ol style="list-style-type: none"> 1) Stabilize erosion behind Herschel Lake culvert discharge. Engineer Observe. 2) Video & smoke inspect sewers near Morrison St & Grape Creek. Engineer to open storm and sanitary manhole lid and look for surcharge during rain event. 3) Video inspect culvert under McVey Ave then improve plans, specification and estimate to implement improvement. Engineer observe. 4) Village and/or contractor implement improvements for access to maintain bar racks near discharge at northwest bend of East 1st. Engineer observe. 5) Video inspect drain pipes near sink holes that exist west of county animal shelter. Communicate with IDOT. 6) Communicate with IDOT for clearing vegetation, stabilizing erosion; repairing sinkhole & fence at discharge near baseball fields and I74 7) Prepare plan, specification and estimate to mitigate erosion north of Herschel Dr and east of Hodge Street. 8) Ensure erosion control is maintained on disturbed areas along & adjacent to IL Rt 1. Establish turf. 9) Continue to communicate with Burger King to mitigate erosion on bank of Grape Creek near parking 10) Prepare plan notice, then remove and dispose of sediment from Northwest corner of Washington Street and Grape Creek. corner of Washington Street and Grape Creek.

ATTACHMENT H
Annual Facility Inspection Report
MS4 PHASE 2 NPDES Permit No. IL400664
Village of Tilton, Illinois
(Reporting Period March 2019/2020)

PROPOSED 2020/2021 MS4 PHASE 2 NPDES STORM WATER ACTIVITY SUMMARY (continued)

BMP #	BMP	Category	Description	Proposed Activity
F	Pollution Prevention/ Good Housekeeping (continued)	F.2	Inspection and Maintenance Program	11) Consider planning removal of flow restriction upstream of Keegan Street Bridge. Open sanitary lid prior to inspection. 12) Remove trash and scum from streams. 13) Separate storm & sanitary cross-section on Adam St.
		F.3	Municipal Operations Storm Water Control	Perform visual inspection of streams within Village jurisdiction for accumulated debris or erosion.
		F.4	Municipal Operation Waste Disposal	Improve operational plans to separate debris from stream, drainage system and various public works clean-ups into recyclables, landscape waste and garbage. Dispose or recycle materials in manner avoiding storm water pollution. Continue to improve drainage conditions to prevent mixing of storm and sanitary sewers.
		F.5	Flood Management / Access Guidelines	Remove debris build-up obstructing or potentially restricting channel and/or bridges. Address erosion along creek allowing water to flow consistently and naturally through Village in manner minimizing flooding potential. Obtain permits where required.
		F.6	Other Municipal Operation Controls	Inspect and estimate capacity of drainage facilities immediately upstream of Village and plot on digital map.

TENTATIVE LIST OF 2020/2021 CONSTRUCTION & MAINTENANCE PROJECTS

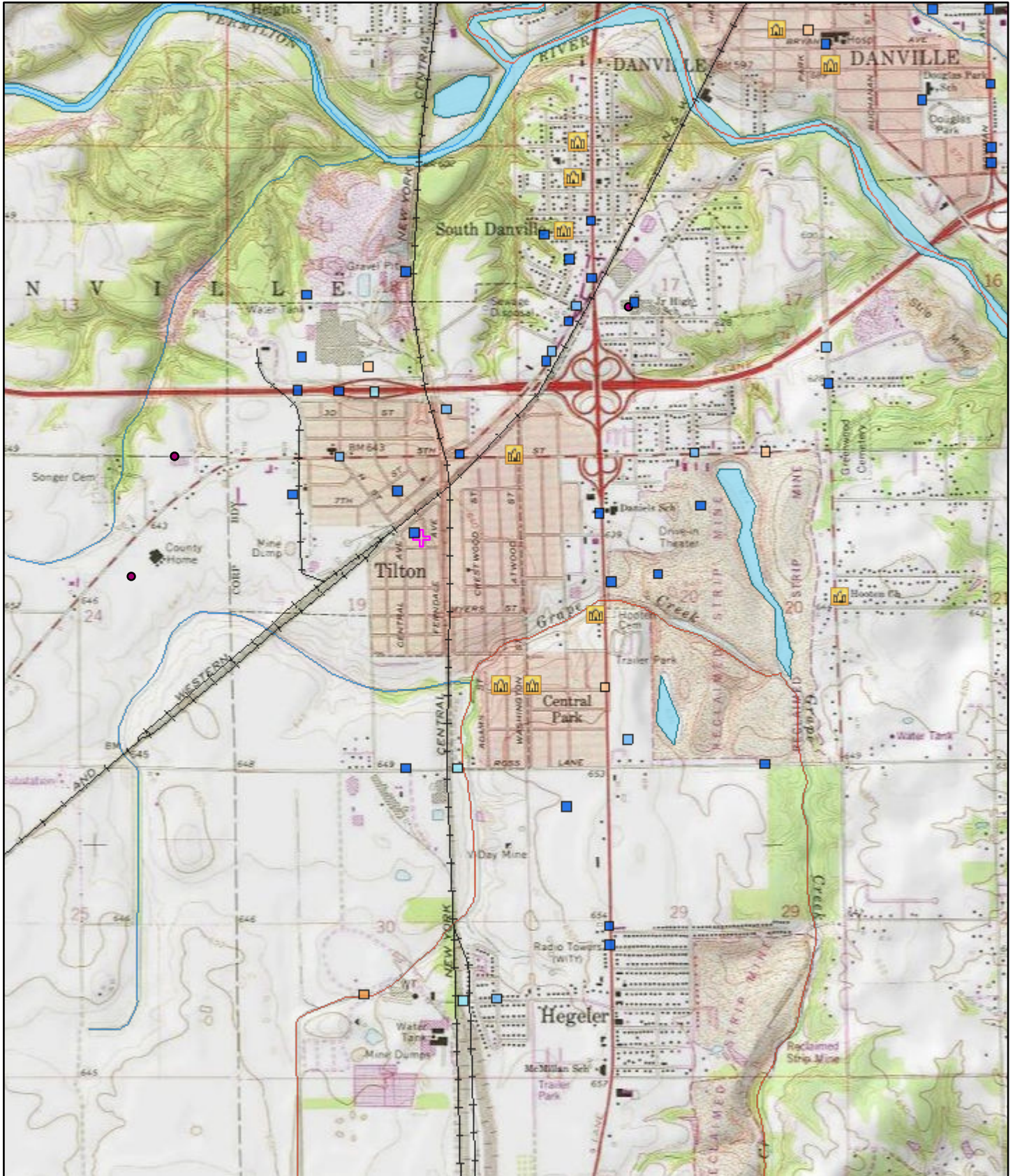
Project	Item #	Item	Status
MORRISON STREET STORM SEWER	I	DRAINAGE IMPROVEMENT	INSPECT STORM MANHOLE & SMOKE SANITARY
EAST 1 st STREET CHANNEL CLEARING	II	DEBRIS REMOVAL, GRADING & DRAINAGE MAINTENANCE	CURRENTLY BEING IMPROVED, FURTHER INSPECTIONS & ENGINEERING SUMMER & FALL 2019
McVEY STREET CULVERT	III	INSPECT & MITIGATE CULVERT CONDITIONS	VIDEO INSPECT, PREPARE PLAN, SPECIFICATION & COST ESTIMATE THEN IMPLEMENT IMPROVEMENT
SOUTHGATE STORM SEWER	IV	DISCHARGE EROSION MITIGATION	THEN IMPLEMENT IMPROVEMENT SUMMER FALL 2019
VOTEC TREATMENT PLANT DEACTIVATION SITE GRADING	V	DEMOLITION & SITE GRADING	ELIMINATE HAZARDS AND GRADE SITE
1 st , LANE, SOUTHGATE STREETS EXCAVATIONS, GRADING & PAVING	VI	DRAINAGE, GRADING & PAVING	CONTINUE IMPROVEMENTS, STRENGTHEN EROSION CONTROL & ESTABLISH TURF
SANITARY SEWER TREATMENT PLANT IMPROVEMENTS	VII	RETROFIT SITE IMPROVEMENTS	OBTAIN PLAN, PERMITS REVIEW AND IMPLEMENT
"G" STREET & BRIDGES	VIII	APPROACH PAVEMENT BRIDGE JOINT REPLACEMENT	COORDINATE WITH ENGINEER REGARDING FUNDS FINALIZE IMPROVEMENT PLANS AND IMPLEMENT
WALNUT COTTAGES	IX	SITE CLEARING & DEMOLITION	COMPLETE SITE CLEARING & DEMOLITION ALSO SITE PLANNING

ATTACHMENT H
Annual Facility Inspection Report
MS4 PHASE 2 NPDES Permit No. IL400664
Village of Tilton, Illinois
(Reporting Period March 2019/2020)

PUBLIC OUTREACH/EDUCATION MATERIALS

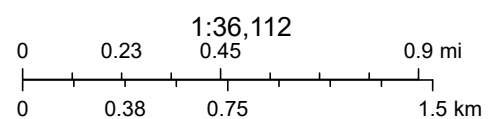
No.	Title	Published	Publication No.	Remarks
1	Implementing the Hierarchy of Controls for Wastewater Worker Protection	WEF		Copy at end report
2	"After the Storm: Storm Water Pollution"	USEPA	EPA833-B-03-002	Available on Village Storm Water Management Website
3	Clean Water - 10 Things You Can Do to Prevent Stormwater Runoff Pollution"	USEPA	-	Available on Village Storm Water Management Website
4	"Stormwater and the Construction Industries"	USEPA	-	Available on Village Storm Water Management Website
5	"Make you home the Solution to Stormwater Pollution"	USEPA	EPA883-B-03003	Available on Village Storm Water Management Website
6	"Water-Efficient Landscaping: Preventing Pollution & Using Resources Wisely"	USEPA	EPA832-F-02-002	Available on Village Storm Water Management Website
7	"Pick Up After Your Pet"	MARC		Available on Village Storm Water Management Website

TILTON AREA ENVIRONMENTAL JUSTICE MAP



February 6, 2020

- | | | |
|------------------|-------------------|-----------------------|
| Airport Polygons | Water dischargers | Impaired Waterbodies |
| Railroads | Air pollution | Streams |
| Churches | Brownfields | Water Bodies |
| Superfund | Schools | Search Result (point) |
| Toxic releases | Impaired Streams | |



Copyright:© 2013 National Geographic Society, i-cubed, EPA OEI, EPA OEI, OFA



IMPLEMENTING THE HIERARCHY OF CONTROLS FOR WASTEWATER WORKER PROTECTION



Engineering Controls

- Use physical barriers to prevent worker exposure to splashes or sprays of potentially contaminated waste water.
- Enclose processes that may generate potentially infectious aerosols (e.g., mixing zones, tank discharge points, pressurized lines).
- Use ventilation equipment to remove contaminated air from the work environment.



Administrative Controls and safe work practices

TRAINING

- Wash hands with soap and water: immediately after handling waste or sewage, *before* eating or drinking, and *before* and *after* using the toilet.
- Avoid touching face, mouth, eyes, nose, or open sores and cuts while handling sewage.
- Before eating, remove work clothes and eat in designated areas.
- Do **not** smoke or chew tobacco/gum.
- Keep open sores, cuts, and wounds covered with clean, dry bandages.
- Remove work clothes before leaving worksite.
- Make appropriate vaccines available, such as those for tetanus, polio, typhoid fever, Hepatitis A and B, and influenza.



Personal Protective Equipment

TRAINING



Goggles



Rubber boots



Liquid repellent coveralls and gloves



Face mask or face shield

- PPE required changes with task, work site, and potential exposures.
- Train workers on how to properly put on, use/wear, and take off PPE, as well as how to clean/disinfect, maintain, store, and dispose of PPE.
- Other types of PPE may be needed to ensure a fully protective ensemble.

IF WORKERS ARE EXPOSED TO WASTE OR SEWAGE

- Gently flush eyes with clean water if sewage contacts eyes.
- Wash cuts and abrasions with soap and water.
- Consider providing workers with post-exposure evaluation and follow-up care, especially for sharps or puncture injuries.
- Clean contaminated work clothing daily with 0.05% chlorine solution.